

Hard Yakka®
Nothing's Tougher.



AUSTRALIA WAS BUILT ON HARD WORK, WHICH IS WHY HARD YAKKA IS ONE OF THIS COUNTRY'S MOST LOVED AND RESPECTED ICONS. IT REPRESENTS EVERYTHING WE VALUE IN THIS COUNTRY. TOUGHNESS, STRENGTH AND HARD WORK.

ONLY THE STRONG SURVIVE, WHICH IS WHY HARD YAKKA HAS BEEN AROUND FOR OVER 80 YEARS, BUILDING ITS REPUTATION ON PRODUCING WORKWEAR SPECIFICALLY DESIGNED FOR HARSH AUSTRALIAN CONDITIONS. OVER TIME WE HAVE LED THE WAY WITH LOADS OF INNOVATIVE AND TECHNOLOGICAL ADVANCES.

NO MATTER HOW TOUGH THE JOB, HARD YAKKA WORKWEAR CAN HANDLE IT. IT'S LEGENDARY FOR BEING AS HARD WORKING AS THE MEN AND WOMEN WHO WEAR IT. FAMOUS FOR QUALITY, UNPARALLELED SERVICE AND TAILORED SOLUTIONS, IT'S NOT HARD TO SEE WHY AUSTRALIA GOES TO WORK IN HARD YAKKA.

CONTENTS

HARD YAKKA TIMELINE / 4
HARD YAKKA RANGES / 6
HARD YAKKA ICONS / 9
HARD YAKKA INDUSTRY GUIDE / 10
GARMENT INNOVATION / 11
HI-VISIBILITY STANDARDS / 12
UPF RATINGS / 13

FOUNDATIONS / 14

- PANTS
- SHORTS
- SHIRTS
- POLOS/T-SHIRTS
- JUMPERS/HOODIES
- OUTERWEAR (KNITWEAR, WET WEATHER & COLD WEATHER JACKETS, SAFETY VESTS & DUSTCOATS)
- COVERALLS/OVERALLS

LEGENDS / 34

- PANTS
- SHORTS
- SHIRTS
- JACKETS

KOOLGEAR / 40

- PANTS
- SHORTS
- SHIRTS
- POLOS

3056: BORN IN BRUNSWICK / 46

- PANTS
- SHORTS
- T-SHIRTS
- SHIRTS
- JACKETS

WOMENS / 50

- PANTS
- SHORTS
- SHIRTS
- POLOS

SHIELDTEC FLAME RESISTANT (FR) / 56

- SHIRTS
- PANTS
- COVERALLS
- WOMENS

ACCESSORIES / 62

- GLOVES
- SOCKS
- KNEE PADS
- BELTS
- BEANIES/CAPS

FITTING GUIDE / 68

QUICK REFERENCE GUIDE / 70

HOW TO ORDER / 74

FOOTWEAR / 77

THE LEGEND AT WORK

1930s

David K. Laidlaw begins a small clothing company in his parents' house in Brunswick, Victoria. To come up with a name, he approaches Jim Cushen, an independent advertising agent, and together they settle on Yakka, derived from the Aboriginal word for work. The company narrows its focus to workwear and Hard Yakka is born.



1950s



Hard Yakka has now become the dominant workwear brand in the Australian market. With growing demand, the company makes the decision to expand. Eventually, they settle on a new manufacturing plant in Ballarat Street, Brunswick.

1940s

The Hard Yakka name becomes synonymous with quality, toughness, and durability. The business grows into an Australian institution and it's not long before Hard Yakka opens a new manufacturing plant in Sunbury, which is converted from an old army hall.



1960s

Like its name suggests, Hard Yakka is tireless in its efforts to improve and evolve the product. This quickly translates into further growth and increased demand. Before long, the company builds a new manufacturing plant on six acres of land in Broadmeadows, which becomes the new headquarters.

1970s



Already an integral part of the Australian cultural fabric, Hard Yakka cements its position as an Aussie icon with the launch of the famous 'Railway' commercial. Featuring the famous Hard Yakka chant, written by Mike Brady, it becomes an instant hit with the Australian public.

Staying true to the spirit of its founding fathers, Hard Yakka continues to look for new and better ways to do things. The company introduces an impressive range of Hard Yakka safety and non-safety footwear, which kicks goals. The decade also launches the unforgettable 'Shearing' commercial.



1990s

1980s

With a name like Hard Yakka, there's no time for rest. The company expands its operations over the Tasman and launches the iconic brand in the New Zealand market. It also introduces the famous 'Haulpac' commercial, which becomes an instant icon.



2010s

Hard Yakka continues to grow and innovate in the workwear category. The company introduces several new lines, such as 3056: Born in Brunswick, a fashionable range of functional workwear. It's a long way from its humble beginnings but Hard Yakka has become one of the most recognised brands in the country, and one of the largest suppliers of workwear in the Southern Hemisphere. There's still much to be achieved and so the hard work continues.

OUR RANGES



FOUNDATIONS

Hard Yakka Foundations is our everyday basic range of workwear. It's tough, uncompromising and just like you, gets on with the job. Made for the long haul, Foundations is honest, heavy-duty workwear that thousands of workers rely on every single day of the week. With everything you need and nothing you don't, we guarantee that you're only paying for the essentials when you buy our Foundations workwear.



LEGENDS

Our ultimate range of workwear, Hard Yakka Legends can handle whatever you throw at it. Made from the toughest materials, Legends delivers more comfort, protection and durability every day. Hard Yakka Legends is workwear that's built to last longer.



KOOLGEAR

Nothing's Tougher than Hard Yakka and nothing's cooler than Hard Yakka Koolgear. Engineered with market leading technology, Koolgear keeps you dry and comfortable by drawing perspiration away from the body. Featuring mesh ventilation and lightweight materials, Koolgear is breathable without losing any toughness or durability. When it starts heating up, Koolgear is the only workwear you'll want.



PROTECT FR

The Hard Yakka ShieldTec flame resistant ("FR") range meets the toughest Australian and New Zealand guidelines for flame resistant garments and safety standards worldwide. Like all Hard Yakka products, the ShieldTec range delivers superior comfort and design innovation without compromising your safety.



3056: BORN IN BRUNSWICK

Since the 1930's, Hard Yakka has been making workwear that's as tough as you. 3056: Born in Brunswick delivers the durability and functionality you've come to expect with a street-inspired edge. Whether you're on the building site or at the pub, Hard Yakka's 3056: Born in Brunswick range will have you looking the goods.



WOMEN'S

The Hard Yakka Women's range offers everything you'd expect from our workwear. Durability and comfort are delivered in spades, with a flattering fit tailored for women. Our women's range is kitted out with all the best elements of our workwear, so you're guaranteed to find extra pockets and reinforcement where it's needed most. You'll look and feel the part when you're wearing Hard Yakka Women's workwear.



ACCESSORIES

Hard Yakka Accessories are the perfect addition to our super tough workwear range. Arm yourself with our gloves and knee pads and you're buying the same level of safety that Hard Yakka workwear delivers in spades. Our gloves provide added grip and extra protection whilst the knee pads provide cushioning and protection against the harshest work surfaces. Complete your kit with Hard Yakka belts and socks for the ultimate in comfort and durability throughout the working day. With the Hard Yakka range of accessories, you know you'll be prepared for whatever the day throws at you.



FOOTWEAR

Hard Yakka footwear delivers where it's most required - in comfort, protection and durability. Whether you're after shoes, joggers or boots, you'll be comfortable for the whole day in Hard Yakka footwear. Made to withstand the worst the workplace can throw at them, this footwear is as rugged and tough as you. Harsh conditions are nothing for Hard Yakka footwear, which includes shock absorbent innersoles and anti-static features, plus the latest technology in reinforced toe caps. Whatever the job is, you'll have all the support and protection you need with Hard Yakka footwear.

WORKWEAR ICONS GUIDE



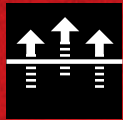
ANTIMICROBIAL

Minimise bacteria and odours with Hard Yakka's range of garments treated with antimicrobial finish. You'll end the day as fresh as you started.



ARTICULATED FIT

Designed with a full range of movement in mind, the Hard Yakka articulated fit features strategically placed darting and engineered seams for the ultimate in comfort.



BREATHABLE

Hard Yakka products that feature fabrics with naturally breathable properties, to keep you cool and comfortable all day.



COOL FLOW

Engineered ventilation placed in high heat zones to allow air to flow through to the body, improving breathability and keeping the wearer cool and comfortable.



CORDURA

Cordura reinforcement offers the ultimate in toughness, standing up to abrasion, tears and scuffs with ease.



EASY CARE

Washing and ironing are a breeze for garments featuring the Easy Care icon. You'll look smarter for longer with minimal effort when you choose Easy Care.



DURABLE WATER REPELLENT

Durable water repellent finish sheds water from the garments surface.



HI-VISIBILITY DAY

A garment that uses high-visibility materials for daytime use only. The high-visibility material must encircle the upper torso. Complies with AS/NZS 4602.1:2011 High-Visibility Safety Garments Class Day.



HI-VISIBILITY DAY/NIGHT

For use in day, night, dawn, dusk or in poor weather conditions where there is illumination from headlights. Complies with AS/NZS 4602.1:2011 High-Visibility Safety Garments Class Day/Night.



HI-VISIBILITY NIGHT

Garments designed for night use using retro reflected light. Complies with AS/NZS 4602.1:2011 High-Visibility Safety Garments Class Night.



KNEE PAD POCKETS

In built provision for knee pads to be inserted into the pants and held in place.



MOISTURE MANAGEMENT

Fabrics designed to keep you dry and comfortable: moisture wicking, quick drying and breathable.



REFLECTEC

Reflective tape used on Hi-Visibility night garments.



STAIN REPELLENT

Bionic finish is a stain repellent that keeps your garments looking good for longer.



STRETCH

Features stretch for the ultimate in comfort by allowing for a full range of movement, no matter what the task at hand is.



SUPERCREASE

We know it's important to look good no matter what the day throws at you. Hard Yakka garments treated with Supercrease will ensure you look as polished and sharp at the end of the day as you did at the start of the day.



TRIPLE STITCHING

Triple stitching assists with the reinforcement of the garment in stress points to make it extra tough and durable.



UPF RATING

An Ultraviolet Protection Factor (UPF) rating for Ultraviolet Radiation transmitted through a fabric onto the skin. Look for garments with a UPF 40 or 50+ rating to be assured of excellent protection. Complies with AS/NZS 4399:1996 Sun Protection Clothing Classification.



WATERPROOF

Garments constructed with waterproof fabrics and have been seam sealed to prevent water penetrating the inside of the garment.

INDUSTRY GUIDE



WHITE

- Painters
- Plasterers
- Hospitals

Most painters wear white because it doesn't contrast or highlight white paint drops. White workwear is also easy to bleach and remove paint from. Key Items: Y02500 Foundations Drill Cargo Pant, Y05500 Foundations Drill Cargo Short, Y07500 Foundations Cotton Drill Shirt Long Sleeve, Y01555 Foundations Tradesman Cotton Drill Action Back Overall



BLACK

- All Trades

Black workwear hides grease and generally most dirt, allowing the wearer to maintain a professional appearance, no matter what the task at hand involves. Key Items: Y02202 Legends Pant, Y11306 Foundations Pique Short Sleeve Polo



LIGHT BLUE

- Mechanics

Mechanics need to ensure that their workwear is comfortable and lightweight yet protective. Buttons and studs should be covered to ensure they do not catch or scratch car or motorcycle paint work. Key Item: Y00015 Foundations Poly Cotton Coverall Light Blue



KHAKI

- Carpenters
- Landscapers
- Construction

Khaki coloured workwear is generally worn by those who work with wood or earth as dirt and wood shavings are well disguised. Key Items: Y02501 Foundations Drill Pant, Y01010 Foundations Bib & Brace Cotton Drill Overall, Y07393 Legends Ripstop Short Sleeve Shirt



NAVY

- Plumbers
- Electricians
- Mechanics

Navy workwear hides dirt, grease and grime, allowing the wearer to maintain a professional appearance even in the dirtiest of working conditions. Key Items: Y07510 Foundations Cotton Drill Short Sleeve Shirt, Y11363 Foundations Crew Neck Short Sleeve T-Shirt, Y05038 Legends 3D Stretch Short



GREEN

- Agriculture
- Councils

Green is a natural colour traditionally associated with those who work outdoors in agriculture. Councils also use this colour to distinguish their workforce. Key Item: Y01555 Foundations Tradesman Cotton Drill Action Back Overall Green

GARMENT INNOVATION

QUALITY ALWAYS HAS BEEN AND ALWAYS WILL BE PARAMOUNT FOR HARD YAKKA.

Only the best is good enough to bear the Hard Yakka brand label. To ensure all Hard Yakka garments deliver quality, toughness, durability, comfort and functionality that will stand the test of time, they're subjected to a wide range of rigorous tests. These tests include abrasion and tensile strength tests, wash tests, perspiration, seam and pilling tests and colour tests.

Rigorous testing is only one of the reasons why nothing's tougher than Hard Yakka. Our ongoing commitment to innovative product development continues to keep Hard Yakka at the forefront of workwear fabric technology and design, delivering market leading workwear solutions.

The Hard Yakka product development team constantly search the globe for new ways to make workwear even more comfortable, safe and functional. The result is regular upgrades to existing workwear and a constant stream of new breakthrough designs.

At Hard Yakka, the hard yakka never stops.

WASH TESTS

TESTED

PERSPIRATION, SEAM AND PILLING TESTS

TESTED

TENSILE STRENGTH TESTS & ABRASION TESTS

TESTED

COLOUR TESTS

TESTED

HI-VISIBILITY STANDARDS

Hard Yakka Hi-Visibility workwear meets relevant Australian and New Zealand Standards, AS/NZS 4602.1:2011 for high-visibility safety garments.



HI-VISIBILITY DAY

Y11360 - Foundations Hi-Visibility Two Tone Cotton Long Sleeve Polo.



HI-VISIBILITY NIGHT

Y07745 - Koolgear Ventilated Long Sleeve Shirt with Tape.



HI-VISIBILITY DAY/NIGHT

Y07740 - Koolgear Hi-Visibility Long Sleeve Shirt with Tape.

IMPORTANT LIMITATIONS OF USE

Under no circumstances should Class Day (D) garments be worn for visibility purposes at night. Any markings, attachments, screen prints or other alterations, accessories or coverings not incorporated into the original product may not only void the garment's compliance with the appropriate standard, they may also put the user at risk by reducing the high-visibility performance of the garment.

The high-visibility properties offered by Hard Yakka Hi-Visibility garments may be lessened due to normal wear over time or if the fabric is stretched. Hard Yakka Hi-Visibility garments using natural fibres have been tested and comply to Australian Standards AS/NZS 4602.1:2011 High-Visibility Safety Garments in dry conditions. Wet conditions may alter the compliance of these fabrics to the standard and appropriate care should be taken.

According to the Australian Standard, materials classified as high-visibility for daytime use must be manufactured from a durable fabric of woven or knitted cotton or equivalent man-made fibre that contains a fluorescent pigment or other high-visibility dye, or to which a fluorescent plastic coating has been applied. These materials are subjected to the following tests and must meet or exceed specified minimum requirements for:

- Daylight colour and luminance factor
- Colourfastness to light
- Colourfastness to washing
- Colourfastness to perspiration
- Colour retention testing

In some cases, for safety reasons, a garment must be made from a natural fibre incapable of retaining a fluorescent colour. In these instances, the material is tested for luminance for non-fluorescent materials. Alternatively, man-made fibres are generally capable of retaining a fluorescent colour and are therefore tested for luminance for fluorescent materials. The fabrics used in the manufacture of Hard Yakka Hi-Visibility workwear are tested and must meet or exceed specified minimum requirements for:

- Chromaticity
- Luminance for fluorescent materials
- Luminance for non-fluorescent materials



The Hard Yakka Fade Shade Label helps you identify any change in garment colour. It is a discreet, silicone label that serves as an indicator to show the point at which hi-visibility shades become non-compliant. This label retains its colour through wash and wear, even when the fabric on the garment fades. Positioned on the front of the garment, this innovation makes it easy for Health and Safety officers and employees to assess when Hi-Visibility apparel may no longer be compliant. The Hard Yakka Fade Shade label is a fully patented Workwear Group innovation and is designed to show its compliance to High Visibility: AS/NZS 4602.1:2011, Non-fluorescent Class, Day.

UPF RATINGS



Hard Yakka knows a thing or two about Australia’s unique work conditions. That’s why most Hard Yakka workwear is rated UPF 50+ for Excellent Protection against the harsh Australian sun.

In fact, as you can see from the table below, when it comes to protection from harmful UV rays, Hard Yakka is a tough act to follow. All Hard Yakka workwear has been tested by independent, accredited laboratories and rated according to Australian/New Zealand Standard AS/NZS 4399:1996 Sun Protection Clothing Classification.

There are many important factors that should be considered when selecting your Hard Yakka workwear. The UPF rating is for the fabric only, and does not take into account the design of the garment.

For outdoor workers, Hard Yakka recommends garments that cover the maximum area of the body. For example, Hard Yakka workwear with full arm and leg coverage should be selected. To ensure complete protection, a hat and sunscreen should also be worn. Finally, the UPF protection offered by the garment may be lessened if the fabric is stretched, wet, in close contact with the skin, or worn out due to wear and tear over time.



	UPF RATING	RATING UVR PROTECTION CATEGORY	EFFECTIVE UVR TRANSMISSION
	15, 20	GOOD PROTECTION	6.7 TO 4.2
	25, 30, 35	VERY GOOD PROTECTION	4.1 TO 2.6
	40-50, 50+	EXCELLENT PROTECTION	< 2.5

Hard Yakka

A man with a beard, wearing a blue jumpsuit, is focused on cleaning a metal part with a wire brush. He is standing in a workshop with a corrugated metal wall in the background. Various tools and equipment are visible in the background, including a large metal frame and a workbench with some tools on it.

FOUNDATIONS

EVERYDAY WORKWEAR THAT WON'T LET YOU DOWN.

Reinforced internal pocket bags with signature pocket bag print.



Improved relaxed fit and smart, refreshed look.

Cotton drill is naturally breathable for comfort but hard wearing and durable.

Updated trims and packaging for a fresh, new look.

Multiple pockets for storage needs – front and back hip pockets, coin pocket, cargo pocket, plus secret internal pocket and ruler pocket on cargo pant.

100% cotton drill with weights varying between 185gsm – 310gsm (dependent on style).

Hard Yakka Foundations Workwear features everything you need – and nothing you don't.

- Y02500 features 310gsm cotton drill
- UPF 50+ rating
- Cotton drill is naturally breathable and durable

- Size range 67R-112R, 74L-94L, 87S-132S
- Available in White, Khaki, Green, Navy & Black



Y02501 FOUNDATIONS DRILL PANT

SIZE

72R-122R, 74L-94L, 87S-132S

COLOUR

Khaki (KHA), Green (GRN), Navy (NAV), Black (BLA)

FEATURES

- 310gsm, pre-shrunk 100% cotton drill
- Red internal waistband binding and stitching
- Reinforced internal pocket bags with signature pocket bag print
- Improved relaxed fit with inverted pleat
- Updated trims
- Multiple pockets for all storage needs



Y02615 FOUNDATIONS DRILL PANT WITH DOUBLE HOOP TAPE

SIZE

72R-112R, 74L-94L, 87S-132S

117R-122R available in Safety Orange (SOR) only

COLOUR

Safety Orange (SOR), Navy (NAV)

FEATURES

- 310gsm, pre-shrunk 100% cotton drill
- Red internal waistband binding and stitching
- Reinforced internal pocket bags with signature pocket bag print
- Improved relaxed fit with inverted pleat
- Updated trims
- Multiple pockets for all storage needs
- ReflecTec 50mm reflective tape



Y02500 FOUNDATIONS DRILL CARGO PANT

SIZE

67R-112R, 74L-94L, 87S-132S

COLOUR

White (WHI), Khaki (KHA), Green (GRN), Navy (NAV), Black (BLA)

FEATURES

- 310gsm, pre-shrunk 100% cotton drill
- Red internal waistband binding and stitching
- Reinforced internal pocket bags with signature pocket bag print
- Improved relaxed fit
- Updated trims
- Multiple pockets for all storage needs including bellowed cargo pocket
- Nylon zip fly & plastic button closure



*UPF 50+ rating not applicable to White



Y02750 FOUNDATIONS DRILL CARGO PANT WITH TAPE

SIZE

72R-122R, 74L-94L, 87S-132S

COLOUR

Navy (NAV)

FEATURES

- 310gsm, pre-shrunk 100% cotton drill
- Red internal waistband binding and stitching
- Reinforced internal pocket bags with signature pocket bag print
- Improved relaxed fit
- Updated trims
- Multiple pockets for all storage needs including bellowed cargo pocket
- Nylon zip fly & plastic button closure
- ReflecTec 50mm reflective tape hoops



Y02560 FOUNDATIONS ELASTIC WAIST DRILL PANT

SIZE

S-5XL

COLOUR

Green (GRN), Navy (NAV)

FEATURES

- 185gsm, pre-shrunk 100% cotton drill
- Contrast red internal stitching
- Red internal waistband binding and stitching
- Reinforced internal pocket bags with signature pocket bag print
- Improved relaxed fit
- Updated trims
- Multiple pockets for all storage needs





Y02594 FOUNDATIONS PERMANENT PRESS PLAIN FRONT POLY VISCOSE PANT WITH BIONIC FINISH & SUPERCREASE

SIZE

72R-107R, 74L-94L, 87S-132S

COLOUR

Putty (PUT), Olive (OLI) Gunmetal (GMT), Navy (NAV), Midnight (MDN), Brown (BRO), Black (BLA)

FEATURES

- 245gsm, 80% polyester/20% viscose fabric
- Bionic and Supercrease finishes
- Invisible expandable waistband
- Fob pocket
- Two jetted back hip pockets
- Two side pockets
- Nylon zip fly & plastic button closure



Y02592 FOUNDATIONS PERMANENT PRESS PLEAT FRONT POLY VISCOSE PANT WITH BIONIC FINISH & SUPERCREASE

SIZE

72R-107R, 74L-94L, 87S-132S

COLOUR

Bottle Green (BGR), Midnight (MDN), Black (BLA)

FEATURES

- 245gsm, 80% polyester/20% viscose fabric
- Bionic and Supercrease finishes
- Double pleated front
- Jetted back hip pockets with button closure
- Two side pockets & fob pocket
- Nylon zip fly and plastic button closure



Y02590 FOUNDATIONS PERMANENT PRESS POLY VISCOSE CARGO PANT WITH BIONIC FINISH

SIZE

72R-112R, 74L-94L, 87S-132S

COLOUR

Midnight (MDN), Black (BLA)

FEATURES

- 245gsm, 89% polyester/20% viscose fabric
- Bionic Finish for stain release
- Cargo & mobile phone bellow pockets with mitred flaps
- Waistband with five wide belt loops
- Back darts
- Mitred patch hip pockets with mitred flaps
- Nylon zip fly & plastic button closure



Y03875 FOUNDATIONS MOLESKIN 5 POCKET COTTON JEAN

SIZE

77R-102R, 74L-89L, 87S-122S

COLOUR

Navy (NAV)

FEATURES

- 490gsm, 100% cotton weft sateen brushed fabric
- Straight leg cut with traditional 5 pocket jean styling
- Waistband with six belt loops
- Reinforced stress points
- Plastic zip fly & button closure



Y03876 FOUNDATIONS MOLESKIN PLAIN FRONT COTTON JEAN

SIZE

77R-102R, 74L-89L, 87S-122S

COLOUR

Navy (NAV)

FEATURES

- 490gsm, 100% cotton weft sateen brushed fabric
- Waistband with seven belt loops & button closure
- Straight leg styling
- Two side pockets & two jetted hip back pockets
- Plastic zip fly & button closure





Y44610 FOUNDATIONS STRETCH DENIM JEAN

SIZE

72R-102R, 74L-89L, 87S-112S

COLOUR

Navy (NAV)

FEATURES

- 425gsm, 98% cotton/2% elastomer denim
- Lightly washed
- Straight leg cut with traditional 5 pocket jean styling
- Reinforced & riveted stress points
- Metal zip fly & stud button closure



Y03514 FOUNDATIONS 14 1/2 OZ ENZYME WASHED RIGID DENIM JEAN

SIZE

77R-107R, 74L-94L, 87S-132S

COLOUR

Navy (NAV)

FEATURES

- 490gsm, 100% cotton denim
- Enzyme washed
- Straight leg cut with traditional 5 pocket jean styling
- Reinforced & riveted stress points for durability
- Metal zip fly & stud button



Y03513 FOUNDATIONS 14 1/2 OZ ENZYME WASHED DENIM JEAN WITH TAPE

SIZE

77R-107R, 74L-94L, 87S-132S

COLOUR

Navy (NAV)

FEATURES

- 490gsm, 100% cotton denim
- Enzyme washed
- Straight leg cut with traditional 5 pocket jean styling
- Reinforced & riveted stress points for durability
- Metal zip fly & stud button
- 50mm reflective tape hoops



Y05501 FOUNDATIONS DRILL SHORT WITH SIDE TABS

SIZE

72R-127R

COLOUR

Khaki (KHA), Green (GRN), Navy (NAV)

FEATURES

- 310gsm, pre-shrunk 100% cotton drill
- Red internal waistband binding and stitching
- Reinforced internal pocket bags with signature pocket bag print
- Improved relaxed fit
- Updated trims
- Multiple pockets for all storage needs including ruler pocket



Y05511 FOUNDATIONS DRILL SHORT WITH BELT LOOPS

SIZE

72R-127R

COLOUR

Khaki (KHA), Green (GRN), Navy (NAV)

FEATURES

- 310gsm, pre-shrunk 100% cotton drill
- Red internal waistband binding and stitching
- Reinforced internal pocket bags with signature pocket bag print
- Improved relaxed fit
- Updated trims
- Multiple pockets for all storage needs including ruler pocket



Y05500 FOUNDATIONS DRILL CARGO SHORT

SIZE

67R-112R

COLOUR

White (WHI), Khaki (KHA), Green (GRN), Navy (NAV), Black (BLA)

FEATURES

- 310gsm, pre-shrunk 100% cotton drill
- Red internal waistband binding and stitching
- Reinforced internal pocket bags with signature pocket bag print
- Improved relaxed fit
- Updated trims
- Multiple pockets for all storage needs



*UPF 50+ rating not applicable to WHI



Y05545 FOUNDATIONS ELASTIC WAIST DRILL SHORT

SIZE

S-5XL

COLOUR

Green (GRN), Navy (NAV)

FEATURES

- 185gsm, pre-shrunk cotton drill
- Red internal waistband binding and stitching
- Reinforced internal pocket bags with signature pocket bag print
- Improved relaxed fit with elastic waistband and drawstring
- Updated trims
- Multiple pockets for all storage needs



Y05594 FOUNDATIONS PERMANENT PRESS PLAIN FRONT EXPANDABLE WAISTBAND POLY VISCOSE SHORT WITH BIONIC FINISH & SUPERCREASE

SIZE

77R-127R

COLOUR

Midnight (MDN), Navy (NAV)

FEATURES

- 245gsm, 80% polyester/20% viscose fabric
- With Supercrease and Bionic finishes
- Invisible expandable waistband
- Fob pocket
- Two jetted back hip pockets
- Two side pockets
- Nylon zip fly & plastic button closure



Y05590 FOUNDATIONS PERMANENT PRESS POLY VISCOSE CARGO SHORT WITH BIONIC FINISH

SIZE

77R-112R, 117S-132S

COLOUR

Midnight (MDN), Black (BLA)

FEATURES

- 245gsm, 80% polyester/20% viscose fabric
- Bionic Finish
- Cargo & mobile phone bellow pockets with mitred flaps
- Back darts
- Mitred patch hip pockets with mitred flaps
- Nylon zip fly & plastic button closure



Y05681 FOUNDATIONS ENZYME WASHED DENIM SHORT

SIZE

77R-112R

COLOUR

Navy (NAV)

FEATURES

- 490gsm, 100% cotton denim
- Enzyme washed traditional 5 pockets work jean styling
- Reinforced & riveted stress points
- Stud button closure



**HARD YAKKA SHORTS
FEATURE A VARIETY
OF WAISTBAND
ADJUSTMENT OPTIONS
TO SUIT YOUR SHAPE.**



Y07500 FOUNDATIONS COTTON DRILL LONG SLEEVE SHIRT

SIZE

S-6XL (XS available in KHA, NAV, GRN, GRY)

COLOUR

White (WHI), Khaki (KHA), Safety Orange (SOR), Blue Medit (BME), Navy (NAV), Green (GRN), Grey (GRY)

FEATURES

- 185gsm, preshrunk 100% cotton drill
- Pleated back
- Two piece collar & stand
- Two button down chest pockets
- Pen partition in left pocket
- Full open front closure



Excludes White

^ Safety Orange only: Complies with AS/NZS 4602.1:2011 High-Visibility Safety Garments Class Day



Y07530 FOUNDATIONS COTTON DRILL CLOSED FRONT LONG SLEEVE SHIRT

SIZE

S-6XL

COLOUR

Khaki (KHA), Safety Orange (SOR), Blue Medit (BME), Green (GRN), Navy (NAV)

FEATURES

- 185gsm, preshrunk 100% cotton drill
- Pleated back
- Two piece collar & stand
- Two button down chest pockets
- Pen partition in left pocket
- Closed front & placket sleeves



^ Safety Orange only: Complies with AS/NZS 4602.1:2011 High-Visibility Safety Garments Class Day



Y07528 FOUNDATIONS COTTON CHAMBRAY LONG SLEEVE SHIRT

SIZE

S-5XL

COLOUR

Chambray (CHM)

FEATURES

- 140gsm, pre-shrunk 100% cotton chambray
- Pleated back
- Two piece collar & stand
- Placket sleeves
- Two button down chest pockets
- Pen partition in left pocket
- Full open front closure



Y07510 FOUNDATIONS COTTON DRILL SHORT SLEEVE SHIRT

SIZE

S-6XL (XS available in KHA, NAV, GRN)

COLOUR

Safety Orange (SOR), Blue Medit (BME), Grey (GRY), Khaki (KHA), Green (GRN), Navy (NAV)

FEATURES

- 185gsm, preshrunk cotton drill
- Pleated back
- Two piece collar & stand
- Two chest pockets button down
- Pen partition in left pocket
- Full open front closure



^ Safety Orange only: Complies with AS/NZS 4602.1:2011 High-Visibility Safety Garments Class Day



Y07540 FOUNDATIONS COTTON DRILL CLOSED FRONT SHORT SLEEVE SHIRT

SIZE

S-6XL

COLOUR

Khaki (KHA), Navy (NAV), Green (GRN)

FEATURES

- 185gsm, preshrunk cotton drill
- Pleated back
- Two piece collar & stand
- Two button down chest pockets
- Pen partition in left pocket
- Closed front



Y07529 FOUNDATIONS COTTON CHAMBRAY SHORT SLEEVE SHIRT

SIZE

S-5XL

COLOUR

Chambray (CHM)

FEATURES

- 140gsm, pre-shrunk 100% cotton chambray
- Pleated back
- Two piece collar & stand
- Placket front
- Two button down chest pockets
- Pen partition in left pocket
- Full open front closure





Y07338 FOUNDATIONS CHAMBRAY LONG SLEEVE SHIRT

SIZE

S-4XL

COLOUR

Blue (BLU)

FEATURES

- 140gsm, 60% cotton/40% polyester
- Stain repellent finish
- Updated fit; relaxed fit through body
- 2 piece collar
- Pen partition
- Button front placket
- Double-layered shoulder yoke and back yoke
- Contrast red bar tacks on stress points



EASY CARE



STAIN REPELLENT



Y04310 FOUNDATIONS COTTON TWILL LONG SLEEVE SHIRT

SIZE

S-5XL

COLOUR

Sandstone (020)

FEATURES

- 145gsm, 100% cotton twill
- Two in one roll up option for sleeve length
- Mesh upper back yoke for ventilation
- Two chest pockets with velcro closure flaps, feature detailing & embroidered eyelets
- Pen partition in left pocket
- Full open front closure



UPF RATING EXCELLENT 50+



COOLFLOW



Y07295 FOUNDATIONS CHECK FLANNEL LONG SLEEVE SHIRT

SIZE

S-3XL

COLOUR

Blue Check (BLC), Red Check (REC)

FEATURES

- 260gsm, 100% cotton twill, yarn dyed flannel fabric
- Full open front closure
- Two button down chest pockets
- Pen partition in left pocket



UPF RATING EXCELLENT 50+



Y07339 FOUNDATIONS CHAMBRAY SHORT SLEEVE SHIRT

SIZE

S-4XL

COLOUR

Blue (BLU)

FEATURES

- 140gsm, 60% cotton/40% polyester
- Stain repellent finish
- Updated fit; relaxed fit through body
- 2 piece collar
- Pen partition
- Button front placket
- Double-layered shoulder yoke and back yoke
- Contrast bar tacks on stress points



EASY CARE



STAIN REPELLENT



Y04311 FOUNDATIONS COTTON TWILL SHORT SLEEVE SHIRT

SIZE

S-5XL

COLOUR

Sandstone (020)

FEATURES

- 145gsm, 100% cotton twill
- Mesh upper back yoke for ventilation
- Two chest pockets with velcro closure flaps, feature detailing & embroidered eyelets
- Pen partition in left pocket
- Full open front closure



UPF RATING EXCELLENT 50+



COOLFLOW



Y07982 FOUNDATIONS HI-VISIBILITY TWO TONE LONG SLEEVE COTTON DRILL SHIRT

SIZE

S-5XL

COLOUR

Orange/Navy (ONA), Yellow/Green (YGR), Yellow/
Navy (YNA)

FEATURES

- 185gsm, pre-shrunk 100% cotton drill
- Full open front closure
- Two button down chest pockets
- Pen partition in left pocket
- Back pleats
- Two piece collar and stand
- Fade Shade Indicator for high visibility non-compliance*



* Fade shade indicator is designed to show compliance to High Visibility: AS/NZS 4602.1:2011 Non Fluoro Class, Day.



Y07990 FOUNDATIONS HI-VISIBILITY TWO TONE COTTON DRILL LONG SLEEVE SHIRT WITH TAPE

SIZE

S-4XL

COLOUR

Orange/Navy (ONA), Yellow/Navy (YNA)

FEATURES

- 185gsm, pre-shrunk 100% cotton drill
- ReflecTec 50mm reflective tape
- Full open front closure
- Two button down chest pockets
- Pen partition in left pocket
- Back pleats
- Two piece collar and stand
- Fade Shade Indicator for high visibility non-compliance*



* Fade Shade Indicator is designed to show compliance to High Visibility: AS/NZS 4602.1:2011 Non Fluoro Class, Day.



Y07984 FOUNDATIONS HI-VISIBILITY TWO TONE CLOSED FRONT LONG SLEEVE COTTON DRILL SHIRT WITH GUSSET SLEEVE

SIZE

S-5XL

COLOUR

Orange/Navy (ONA), Yellow/Navy (YNA)

FEATURES

- 185gsm, pre-shrunk 100% cotton drill
- Closed front
- Two button down chest pockets
- Pen partition in left pocket
- Gusset sleeve
- Two piece collar and stand
- Fade Shade Indicator for high visibility non-compliance*



* Fade Shade Indicator is designed to show compliance to High Visibility: AS/NZS 4602.1:2011 Non Fluoro Class, Day.



Y07116 FOUNDATIONS HI-VISIBILITY TWO TONE COTTON DRILL SHORT SLEEVE SHIRT

SIZE

S-5XL

COLOUR

Orange/Navy (ONA), Yellow/Navy (YNA)

FEATURES

- 185gsm, pre-shrunk 100% cotton drill
- Full open front closure
- Two button down chest pockets
- Pen partition in left pocket
- Back pleats
- Two piece collar and stand
- Features Fade Shade Indicator for high visibility non-compliance*



* Fade shade indicator is designed to show compliance to High Visibility: AS/NZS 4602.1:2011 Non Fluoro Class, Day.



Y07227 FOUNDATIONS HI-VISIBILITY COTTON DRILL LONG SLEEVE SHIRT WITH TAPE

SIZE

XS-4XL

COLOUR

Safety Orange (SOR), Navy (NAV)

FEATURES

- 185gsm, pre-shrunk 100% cotton fabric
- ReflecTec 50mm reflective tape
- Full open front closure
- Two button down chest pockets
- Pen partition in left pocket
- Back pleats
- Two piece collar and stand
- Fade Shade Indicator for high visibility non-compliance*



* Fade Shade Indicator is designed to show compliance to High Visibility: AS/NZS 4602.1:2011 Non Fluoro Class, Day.

*Safety Orange only: complies with AS/NZS 4602.01:2011 High-Visibility Safety Garments Class Day/Night

*Navy only: complies with AS/NZS 4602.1:2011 High-Visibility Safety Garments Class Night



Y07989 FOUNDATIONS HI-VISIBILITY COTTON DRILL LONG SLEEVE SHIRT WITH TAPE

SIZE

S-4XL

COLOUR

Safety Orange (SOR)

FEATURES

- 185gsm, pre-shrunk 100% cotton drill
- ReflecTec 50mm reflective tape
- H tape configuration, with hoop around sleeve and chest
- Full open front closure
- Two button down chest pockets
- Pen partition in left pocket
- Back pleats
- Two piece collar and stand
- Fade Shade Indicator for high visibility non-compliance*



* Fade Shade Indicator is designed to show compliance to High Visibility: AS/NZS 4602.1:2011 Non Fluoro Class, Day.

HARD YAKKA FOUNDATIONS SHIRTS FEATURE EVERYTHING YOU NEED - AND NOTHING YOU DON'T.



Y07590 FOUNDATIONS POLY COTTON PERMANENT PRESS LONG SLEEVE SHIRT

SIZE

S-6XL, XS available in PUT, BME, NAV

COLOUR

White (WHI), Putty (PUT), Blue Medit (BME), Gunmetal (GMT), Midnight (MDN), Navy (NAV), Olive (OLI)

FEATURES

- 120gsm, 65% polyester/35% cotton fabric
- Full open front placket closure
- Two button down chest pockets
- Pen partition in left pocket
- Box pleat
- Two button adjustable cuff & sleeve placket vent



Y07690 FOUNDATIONS POLY COTTON PERMANENT PRESS LONG SLEEVE SHIRT WITH EPAULETTES

SIZE

XS-6XL

COLOUR

White (WHI), Blue Medit (BME)

FEATURES

- 120gsm, 65% polyester/35% cotton fabric
- Two piece collar
- Fused shoulder epaulettes
- Full open front placket closure
- Two button down chest pockets
- Pen partition in left pocket
- Box pleat



Y07899 FOUNDATIONS HI-VISIBILITY CLOSED FRONT COTTON DRILL LONG SLEEVE SHIRT WITH TAPE

SIZE

S-6XL

COLOUR

Safety Orange (SOR)

FEATURES

- 185gsm, pre-shrunk 100% cotton drill
- ReflecTec 50mm reflective tape
- Closed front
- Two button down chest pockets with pen partition in left pocket
- Back pleats
- Two piece collar and stand
- Fade Shade Indicator for high visibility non-compliance*



* Fade Shade Indicator is designed to show compliance to High Visibility: AS/NZS 4602.1:2011 Non Fluoro Class, Day.



Y07591 FOUNDATIONS POLY COTTON PERMANENT PRESS SHORT SLEEVE SHIRT

SIZE

S-6XL, XS available in PUT, BME, NAV only

COLOUR

White (WHI), Putty (PUT), Blue Medit (BME), Gunmetal (GMT), Midnight (MDN), Navy (NAV), Olive (OLI)

FEATURES

- 120gsm, 65% polyester/35% cotton fabric
- Full open front placket closure
- Two button down chest pockets
- Pen partition in left pocket
- Box pleat



Y07691 FOUNDATIONS POLY COTTON PERMANENT PRESS SHORT SLEEVE SHIRT WITH EPAULETTES

SIZE

XS-6XL

COLOUR

White (WHI), Blue Medit (BME)

FEATURES

- 120gsm, 65% polyester/35% cotton fabric
- Two piece collar
- Fused shoulder epaulettes
- Full open front placket closure
- Two button down chest pockets
- Pen partition in left pocket
- Box pleat





Y11306 FOUNDATIONS PIQUE SHORT SLEEVE POLO

SIZE

XS-5XL, GRN only available in XS-3XL

COLOUR

White (WHI), Royal (ROY), Green (GRN), Navy (NAV), Black (BLA)

FEATURES

- 190gsm, 65% polyester/35% cotton pique
- Regular fit through body
- Button front placket
- Chest pocket with pen partition
- Splits at side of shirt for ease of movement
- Polo is longer at back for extra coverage
- Rib collar
- Bar tacks on stress points



Y11363 FOUNDATIONS CREW NECK SHORT SLEEVE T-SHIRT

SIZE

XS-3XL

COLOUR

Navy (NAV)

FEATURES

- 190gsm, 100% cotton single jersey
- Regular fit through body
- Semi-branded with Hard Yakka branding on back
- Next to skin cotton for breathability
- Crew neck with ribbed neck
- Twin needle stitching



Y11343 FOUNDATIONS HI-VISIBILITY TWO TONE LONG SLEEVE POLO

SIZE

2XS-5XL

COLOUR

Orange/Navy (ONA), Yellow/Navy (YNA)

FEATURES

- 200gsm, 80% polyester/20% cotton pique
- Regular fit through body
- Button front placket
- Chest pocket with pen partition
- Splits at side of shirt for ease of movement
- Polo is longer at back for extra coverage
- Rib collar with contrast piping
- Bar tacks on stress points



Y11307 FOUNDATIONS PIQUE LONG SLEEVE POLO

SIZE

XS-5XL

COLOUR

Navy (NAV)

FEATURES

- 190gsm, 65% polyester/35% cotton pique
- Regular fit through body
- Button front placket
- Chest pocket with pen partition
- Splits at side of shirt for ease of movement
- Polo is longer at back for extra coverage
- Rib collar & cuffs
- Bar tacks on stress points



Y11356 FOUNDATIONS HI-VISIBILITY V-NECK SHORT SLEEVE T-SHIRT

SIZE

S-3XL

COLOUR

Yellow (YEL)

FEATURES

- 190gsm, 65% polyester/35% cotton single jersey
- Narrow fit through body
- Branding on sleeve
- Polyester for colour fastness and added strength
- Ribbed neck
- Twin needle stitching



Y11332 FOUNDATIONS HI-VISIBILITY TWO TONE SHORT SLEEVE POLO

SIZE

2XS-5XL

COLOUR

Orange/Navy (ONA), Yellow/Navy (YNA)

FEATURES

- 200gsm, 80% polyester/20% cotton pique
- Regular fit through body
- Button front placket
- Chest pocket with pen partition
- Splits at side of shirt for ease of movement
- Polo is longer at back for extra coverage
- Rib collar with contrast piping
- Bar tacks on stress points





Y11950 FOUNDATIONS HI-VISIBILITY TWO TONE LONG SLEEVE POLO WITH TAPE

SIZE

S-3XL

COLOUR

Orange/Navy (ONA), Yellow/Navy (YNA)

FEATURES

- 200gsm, 80% polyester/20% cotton pique
- Regular fit through the body
- Chest pocket with pen partition
- Splits at side of shirt for ease of movement
- Polo is longer at the back for extra coverage
- Button front placket
- Bar tacked stress points
- ReflecTec 50mm reflective tape



100%
COTTON

Y11360 FOUNDATIONS HI-VISIBILITY TWO TONE COTTON LONG SLEEVE POLO

SIZE

XS-5XL

COLOUR

Orange/Navy (ONA), Yellow/Navy (YNA)

FEATURES

- 190gsm, 100% cotton single jersey
- Regular fit through body
- Chest pocket with pen partition
- Splits at side of shirt for ease of movement
- Polo is longer at back for extra coverage
- Button front placket
- Collar made with same fabric as main polo
- Bar tacked stress points



Y11970 FOUNDATIONS HI-VISIBILITY TWO TONE SHORT SLEEVE POLO WITH TAPE

SIZE

S-3XL

COLOUR

Orange/Navy (ONA), Yellow/Navy (YNA)

FEATURES

- 200gsm, 80% polyester/20% cotton pique
- Regular fit through the body
- Chest pocket with pen partition
- Splits at side of shirt for ease of movement
- Polo is longer at the back for extra coverage
- Button front placket
- Bar tacked stress points
- ReflecTec 50mm reflective tape



100%
COTTON

Y11376 FOUNDATIONS HI-VISIBILITY TWO TONE SHORT SLEEVE COTTON POLO

SIZE

XS-5XL

COLOUR

Orange/Navy (ONA), Yellow/Navy (YNA)

FEATURES

- 190gsm, 100% cotton single jersey
- Regular fit through body
- Chest pocket with pen partition
- Splits at side of shirt for ease of movement
- Polo is longer at back for extra coverage
- Button front placket
- Bar tacked stress points





Y19314 FOUNDATIONS HI-VISIBILITY TWO TONE POLAR FLEECE ¼ ZIP JUMPER

SIZE

2XS-6XL

COLOUR

Orange/Navy (ONA), Yellow/Green (YGR),
Yellow/Navy (YNA)

FEATURES

- 300gsm, 100% polyester, low pilling polar fleece
- Kangaroo pouch pockets with zips
- Pull toggles at inner hemline, concealed in pockets
- Zip neck opening & stand up collar
- Left sleeve twin pencil pocket in contrast fabric



Y19316 FOUNDATIONS HI-VISIBILITY TWO TONE POLAR FLEECE VEST

SIZE

2XS-6XL

COLOUR

Orange/Navy (ONA), Yellow/Navy (YNA)

FEATURES

- 300gsm, 100% polyester, low pilling polar fleece
- Concealed front zip pockets
- Pull toggles at inner hemline, concealed in pockets



Y19317 FOUNDATIONS HI-VISIBILITY TWO TONE POLAR FLEECE FULL ZIP JUMPER WITH STRETCH TAPE

SIZE

2XS-6XL

COLOUR

Orange/Navy (ONA), Yellow/Navy (YNA)

FEATURES

- 300gsm, 100% polyester, low pilling polar fleece
- Stretchable reflective tape
- Concealed front zip pockets
- Pull toggles at inner hemline, concealed in pockets
- Left sleeve twin pencil pocket in contrast fabric



Y19325 FOUNDATIONS HI-VISIBILITY TWO TONE BRUSHED FLEECE HOODIE

SIZE

XS-6XL

COLOUR

Orange/Navy (ONA), Yellow/Navy (YNA)

FEATURES

- 320gsm, 100% polyester
- Kangaroo pouch pockets
- Two utility pockets on either side of garment
- Left sleeve twin pencil pocket in contrast fabric
- Mesh hood lining
- Safety drawstring feature on hood ensures drawstring stays inside garment to prevent catching
- Metal eyelets on hood to reinforce drawstring holes
- Ribbed knit fabric on waist & cuffs



Y19327 FOUNDATIONS HI-VISIBILITY TWO TONE BRUSHED FLEECE FULL ZIP HOODIE

SIZE

XS-6XL

COLOUR

Orange/Navy (ONA), Yellow/Navy (YNA)

FEATURES

- 320gsm, 100% polyester
- Two front welt pockets
- Two utility pockets on either side of garment
- Left sleeve twin pencil pocket in contrast fabric
- Full zip front opening
- Mesh hood lining
- Safety drawstring feature on hood ensures drawstring stays inside garment to prevent catching
- Metal eyelets on hood reinforce drawstring holes
- Ribbed knit fabric on waist & cuffs



Y19323 FOUNDATIONS HI-VISIBILITY TWO TONE BRUSHED FLEECE ¼ ZIP JUMPER

SIZE

XS-6XL

COLOUR

Orange/Navy (ONA), Yellow/Navy (YNA)

FEATURES

- 320gsm, 100% polyester
- Kangaroo pouch pockets
- Two utility pockets on either side of garment
- Left sleeve twin pencil pocket in contrast fabric
- ¼ zip neck opening & stand up collar
- Ribbed knit fabric on waist & cuffs





Y19315 FOUNDATIONS POLAR FLEECE ¼ ZIP JUMPER

SIZE

2XS-6XL

COLOUR

Navy (NAV)

FEATURES

- 300gsm, 100% polyester, low pilling polar fleece
- Kangaroo pouch pockets with zip closure
- Pull toggles at inner hemline, concealed in pockets
- Zip neck opening & stand up collar
- Left sleeve twin pencil pocket in contrast fabric



Y19326 FOUNDATIONS BRUSHED FLEECE HOODIE

SIZE

XS-6XL

COLOUR

Grey Marle (613), Navy (NAV), Black (BLA)

FEATURES

- 320gsm, 65% polyester/35% cotton brushed fleece
- Kangaroo pouch pockets
- Two utility pockets on either side of garment
- Left sleeve twin pencil pocket in contrast fabric
- Mesh hood lining
- Safety drawstring feature on hood ensures drawstring stays inside garment to prevent catching
- Metal eyelets on hood to reinforce drawstring holes
- Ribbed knit fabric on waist & cuffs



Y19365 FOUNDATIONS BRUSHED FLEECE FULL ZIP HOODIE

SIZE

S-3XL

COLOUR

Navy (NAV)

FEATURES

- 320gsm, 100% polyester brushed fleece
- Two front welt pockets
- Two utility pockets on either side of garment
- Left sleeve twin pencil pocket in navy fabric
- Full zip front opening
- Safety drawstring on hood to ensure drawstring stays inside garment to prevent catching
- Mesh lining in hood
- Metal eyelets on hood to reinforce drawstring holes
- Ribbed knit fabric on waist and cuffs



Y19322 FOUNDATIONS HI-VISIBILITY TWO TONE BRUSHED FLEECE CREW NECK JUMPER

SIZE

XS-6XL

COLOUR

Orange/Navy (ONA), Yellow/Green (YGR), Yellow/Navy (YNA)

FEATURES

- 320gsm, 100% polyester brushed fleece
- Kangaroo pouch pockets
- Two utility pockets on either side of garment
- Left sleeve twin pencil pocket in contrast fabric
- Ribbed knit fabric on waist, collar & cuffs



Y19324 FOUNDATIONS BRUSHED FLEECE CREW NECK JUMPER

SIZE

XS-6XL

COLOUR

Navy (NAV)

FEATURES

- 320gsm, 65% polyester/35% cotton brushed fleece
- Kangaroo pouch pockets
- Two utility pockets on either side of garment
- Left sleeve twin pencil pocket in contrast fabric
- Ribbed knit fabric on waist, collar & cuffs





Y16050 FOUNDATIONS WOOL ACRYLIC V-NECK JUMPER

SIZE

10-28

COLOUR

Bottle Green (BGR), Navy (NAV), Black (BLA)

FEATURES

- 50% wool/50% low-pill acrylic
- Ribbed waistband & cuffs
- Raglan sleeves
- Safety stitched seams
- Generous fit



Y16051 FOUNDATIONS WOOL ACRYLIC V-NECK VEST

SIZE

10-28

COLOUR

Bottle Green (BGR), Navy (NAV), Black (BLA)

FEATURES

- 50% wool/50% low-pill acrylic
- Ribbed waistband & armhole
- Safety stitched seams
- Generous fit



Y06058 FOUNDATIONS HI-VISIBILITY TWO TONE QUILTED PILOT JACKET

SIZE

S-6XL

COLOUR

Orange/Navy (ONA), Yellow/Green (YGR), Yellow/Navy (YNA)

FEATURES

- 190gsm, polyester oxford weave with PU coating
- Waterproof & seam sealed
- Quilted lining, ribbed waistband and cuffs for warmth
- Internal invisible zip for easy monogram access
- Five pockets
- Internal toggles on hood for catching safety
- Hardened three piece peaked hood for comfort and preventing rain hitting the face
- Shaped storm flap for ease of opening



Y06064 FOUNDATIONS HI-VISIBILITY TWO TONE QUILTED PILOT JACKET WITH TAPE

SIZE

S-6XL

COLOUR

Orange/Navy (ONA), Yellow/Green (YGR), Yellow/Navy (YNA)

FEATURES

- 190gsm, polyester oxford weave with PU coating
- Waterproof & seam sealed
- 50mm reflective tape
- Quilted lining, ribbed waistband and cuffs for warmth
- Internal invisible zip for easy monogram access
- Five pockets
- Internal toggles on hood for catching safety
- Hardened three piece peaked hood
- Shaped storm flap for ease of opening



Y06057 FOUNDATIONS HI-VISIBILITY 4 IN 1 TWO TONE JACKET WITH TAPE

SIZE

2XS-6XL

COLOUR

Orange/Navy (ONA), Yellow/Navy (YNA)

FEATURES

- Outer jacket: 190gsm, polyester oxford weave with PU coating and taffeta lining; Vest: 190gsm, oxford with 280gsm, polar fleece internal
- Reversible inner vest
- 50mm reflective tape
- Waterproof and seam sealed
- Body & sleeves are 'T' shaped providing less seams and superior comfort
- Internal invisible zip for easy monogram access
- Peaked hood to prevent rain hitting the face
- Zip gusset for easy grab when zipping, chin guard & shaped storm flap for easy opening of the jacket





Y06556 FOUNDATIONS HI-VISIBILITY 6 IN 1 TWO TONE JACKET WITH TAPE

SIZE

XS-6XL

COLOUR

Orange/Navy (ONA), Yellow/Green (YGR),
Yellow/Navy (YNA)

FEATURES

- Outer jacket: 190gsm, 100% polyester oxford weave with PU coating
- Polyester lining on jacket and low-pill polar fleece lining on inner vest and jacket
- 50mm reflective tape
- Inner jacket has zip off sleeves for vest options
- Waterproof and seam sealed
- Logo access for both inner and outer jackets



Y17156 FOUNDATIONS HI-VISIBILITY SHELL JACKET WITH TAPE

SIZE

XS-6XL, XS-8XL (296 Only)

COLOUR

Fluro Orange (296), Fluro Yellow (FYE)

FEATURES

- 190gsm, 100% polyester oxford weave with PU coating
- 50mm reflective tape
- Waterproof and seam sealed
- Neoprene storm cuffs & concealed hood
- Storm flap in front of nylon zip opening
- Two dual front pockets with flaps & velcro



Y17062 FOUNDATIONS SHELL PANT WITH TAPE

SIZE

S-8XL

COLOUR

Fluro Yellow (FYE), Fluro Orange (296)

FEATURES

- 190gsm, 100% polyester oxford weave with PU coating
- 50mm reflective tape hoops
- Seam sealed
- Zip & gusset on hem with press studs
- Elastic waist with drawstring and front pockets



Y06546 FOUNDATIONS HI-VISIBILITY TWO TONE SOFT SHELL JACKET WITH STRETCH TAPE

SIZE

S-5XL

COLOUR

Orange/Navy (ONA), Yellow/Navy (YNA)

FEATURES

- 300gsm, 100% bonded polyester with jersey face and polar fleece back
- Shower & wind resistant
- Stretchable reflective tape with reflective piping trim
- Two concealed front zip pockets with rubber pullers
- Adjustable velcro cuffs
- Right chest pocket
- Concealed waistband drawcord with toggles



Y06570 FOUNDATIONS SOFT SHELL JACKET

SIZE

S-3XL

COLOUR

Black (BLA)

FEATURES

- 300gsm, 100% bonded polyester with jersey face and polar fleece back
- Shower & wind resistant
- Two concealed front zip pockets with rubber pullers
- Adjustable velcro cuffs
- Right chest pocket
- Concealed waistband drawcord with toggles





Y06554 FOUNDATIONS HI-VISIBILITY TWO TONE BLUEY JACKET WITH TAPE

SIZE

87R-132R

COLOUR

Orange/Navy (ONA), Yellow/Navy (YNA)

FEATURES

- 470gsm, Hi-Visibility outer fabric 100% wool, Navy outer fabric 90% wool/10% polyester
- 50mm reflective tape
- Two welt pockets
- Plastic zip
- One internal pocket on inside left chest



Y21027 FOUNDATIONS HI-VISIBILITY POLYESTER VEST

SIZE

S-4XL

COLOUR

Fluro Yellow (FYE)

FEATURES

- 100% polyester tricot
- Adjustable velcro closure
- Bound edges



Y06040 FOUNDATIONS TRADESMAN COTTON DUSTCOAT

SIZE

82R-122R

COLOUR

White (WHI), Grey (GRY)

FEATURES

- 185gsm, 100% pre-shrunk cotton fabric
- Raglan sleeve
- Concealed front button closure
- Two large side pockets
- Left chest pocket with pencil partition



Y06545 FOUNDATIONS HI-VISIBILITY TWO TONE COTTON DRILL WORK JACKET WITH TAPE

SIZE

S-4XL

COLOUR

Orange/Navy (ONA), Yellow/Navy (YNA)

FEATURES

- 310gsm, 100% pre-shrunk cotton drill & cotton brushed lining
- 50mm reflective tape
- Large two way velcro flap front pockets & side mobile phone zip pockets
- Back pleats allowing movement
- Velcro closure on sleeve cuff



Y21283 FOUNDATIONS HI-VISIBILITY POLYESTER VEST WITH TAPE

SIZE

S-4XL (FYE), S-8XL (296)

COLOUR

Fluro Orange (296), Fluro Yellow (FYE)

FEATURES

- 100% polyester tricot
- 50mm reflective tape
- Adjustable velcro closure
- Bound edges



Y06050 FOUNDATIONS POLY COTTON DUSTCOAT

SIZE

82R-122R

COLOUR

White (WHI), Navy (NAV), Blue Medit (BME), Grey (GRY)

FEATURES

- 220gsm, 65% polyester/35% cotton fabric
- Raglan sleeves
- Metal press-stud closure
- Two large front patch pockets
- Left chest pocket with pen partition





Y00010 FOUNDATIONS COTTON DRILL COVERALL

SIZE

67R-122R, 74L-94L, 87S-132S

COLOUR

White (WHI), Safety Orange (SOR), Khaki (KHA), Green (GRN), Navy (NAV)

FEATURES

- 310gsm, pre-shrunk 100% cotton drill
- Left chest pocket with pencil & ruler partition
- Heavy-duty nickel plated studs
- Raglan sleeves & elasticised back waist
- Utility pocket
- Mobile phone pocket, reinforced pocket lining & two side pockets



#Excludes White

^Safety Orange only: complies with AS/NZS 4602.1:2011 High-Visibility Safety Garments Class Day



Y00030 FOUNDATIONS LIGHTWEIGHT COTTON DRILL COVERALL

SIZE

72R-122R, 74L-94L, 87S-132S

COLOUR

White (WHI), Safety Orange (SOR), Khaki (KHA), Blue Medit (BME), Red (RED), Navy (NAV)

FEATURES

- 185gsm, pre-shrunk 100% cotton drill
- Left chest pocket with pencil & ruler partition
- Raglan sleeves & gusset
- Nylon studs & elasticised back waist
- Utility pocket
- Mobile phone pocket
- Reinforced pocket lining & two side pockets



#Excludes White

^Safety Orange only: complies with AS/NZS 4602.1:2011 High-Visibility Safety Garments Class Day



Y00015 FOUNDATIONS POLY COTTON COVERALL

SIZE

77R-122R, 74L-94L, 87S-132S

COLOUR

Blue Medit (BME), Green (GRN), Navy (NAV)

FEATURES

- 220gsm, 65% polyester/35% cotton fabric
- Left chest pocket with pencil partition
- Nickel plated gripper studs
- Raglan sleeves & elasticised back waist
- Utility pocket
- Mobile phone pocket
- Reinforced pocket lining & two side pockets



Y01555 FOUNDATIONS TRADESMAN COTTON DRILL ACTION BACK OVERALL

SIZE

72R-122R, 74L-94L, 87S-132S

67R available in NAV & WHI

COLOUR

White (WHI), Khaki (KHA), Green (GRN), Navy (NAV)

FEATURES

- 310gsm, pre-shrunk 100% cotton drill
- Elastic straps & elasticised back waist
- Left chest pocket with pencil partition
- Mobile phone pocket, double layered pocket lining & two side pockets
- Heavy-duty nickel plated studs



#Excludes White



Y01010 FOUNDATIONS COTTON DRILL BIB & BRACE OVERALL

SIZE

67R-122R, 74L-94L, 87S-132S

COLOUR

White (WHI), Khaki (KHA), Navy (NAV)

FEATURES

- 310gsm, pre-shrunk 100% cotton drill
- Chest pocket with pencil partition
- Adjustable straps with heavy duty nickel buckles
- Heavy-duty nickel plated studs
- Ruler leg pocket & two side pockets
- Mobile phone pocket, double layered pocket lining



#Excludes White



Y00270 FOUNDATIONS HI-VISIBILITY TWO TONE COTTON DRILL COVERALL

SIZE

77R-117R, 74L-94L, 87S-132S

COLOUR

Orange/Navy (ONA), Yellow/Navy (YNA)

FEATURES

- 310gsm, pre-shrunk 100% cotton drill
- Left chest pocket with pencil & ruler partition
- Heavy-duty nickel plated studs
- Mobile phone pocket, reinforced pocket lining & two side pockets
- Raglan sleeves & elasticised back waist
- Utility pocket



Y00262 FOUNDATIONS HI-VISIBILITY TWO TONE COTTON DRILL COVERALL WITH TAPE

SIZE

77R-117R, 74L-94L, 87S-132S

COLOUR

Orange/Navy (ONA), Yellow/Navy (YNA)

FEATURES

- 310gsm, pre-shrunk 100% cotton drill
- 50mm reflective tape in H-configuration, suitable for light industrial wash
- Left chest pocket with pencil & ruler partition
- Mobile phone pocket, reinforced pocket lining & two side pockets
- Utility pocket & elasticised back waist



Y00122 FOUNDATIONS HI-VISIBILITY COTTON DRILL COVERALL WITH TAPE

SIZE

82R-122R, 87S-132S

COLOUR

Safety Orange (SOR)

FEATURES

- 310gsm, pre-shrunk 100% cotton drill
- 50mm reflective tape
- Left chest pocket with pencil & ruler partition
- Mobile phone pocket, reinforced pocket lining & two side pockets



Y01526 FOUNDATIONS TWO TONE COTTON DRILL ACTION BACK OVERALL

SIZE

77R-117R, 74L-94L, 92S-132S

COLOUR

Orange/Navy (ONA), Yellow/Navy (YNA)

FEATURES

- 310gsm, pre-shrunk 100% cotton drill
- Left chest pocket with pencil partition
- Elastic straps & elasticised back waist
- Heavy-duty nickel plated studs
- Ruler leg pocket
- Mobile phone pocket, reinforced pocket lining & two side pockets



Y01055 FOUNDATIONS TWO TONE COTTON DRILL ACTION BACK OVERALL WITH TAPE

SIZE

72R-117R, 74L-94L, 92S-132S

COLOUR

Orange/Navy (ONA), Yellow/Navy (YNA)

FEATURES

- 310gsm, pre-shrunk 100% cotton drill
- 50mm reflective tape suitable for light industrial wash
- Elastic straps & elasticised back waist
- Non-spill right chest pocket & left chest pocket with pencil partition
- Mobile phone pocket, reinforced pocket lining & two side pockets
- Heavy-duty nickel plated studs



Y00445 FOUNDATIONS HI-VISIBILITY TWO TONE POLY COTTON COVERALL

SIZE

77R-122R, 74L-94L, 87S-132S

COLOUR

Orange/Navy (ONA), Yellow/Navy (YNA)

FEATURES

- 210gsm, 65% polyester/35% cotton fabric
- Left chest pocket with pencil & ruler partition
- Mobile phone pocket, reinforced pocket lining & two side pockets
- Utility pocket & elasticized back waist



^^Safety Orange only: complies with AS/NZS 4602:2011 High-Visibility Safety Garments Class Day



HARD YAKKA FOUNDATIONS

WORKWEAR
THAT WORKS AS
HARD AS YOU

Hard Yakka



LEGENDS

LEGENDARY WORKWEAR



Our legendary range of toughest, most durable workwear – Hard Yakka Legends.

- Y02202 features 340gsm, 100% cotton Panama weave with silicone wash.
- Articulated fit for comfort & freedom of movement.
- Triple stitched for added strength.
- Cordura reinforcement on key abrasion zones such as knees & pockets.
- Available in sizes 77R-112R, 74L-94L, 87S-132S (L: KHA, NAVY, GRN, BLA only).

See page 36 for details



ORIGINAL
LEGENDS
FIT AND
DESIGN



Y02202 LEGENDS CARGO PANT

SIZE

77R-112R, 74L-94L, 87S-132S
(L: KHA, NAVY, GRN, BLA only)

COLOUR

Khaki (KHA), NEW! Khaki/Charcoal (KHC),
NEW! Charcoal/Charcoal (CAC), Green (GRN),
Navy (NAV), Black (BLA)

FEATURES

- 340gsm, 100% cotton Panama weave with silicone wash
- Articulated fit for comfort & freedom of movement
- Cordura reinforcement on key abrasion zones such as knees & pockets
- Triple stitched for added strength
- Multiple storage pockets



Y02906 LEGENDS EXTRA LIGHT CARGO PANT

SIZE

72R-112R, 74L-94L, 87S-132S

COLOUR

Khaki (KHA), Navy (NAV)

FEATURES

- 260gsm, 100% cotton duck weave, lightly washed pre-shrunk canvas
- Multiple storage pockets with provisions for mobile phone
- Ruler pocket containing extra tool & pencil partition, plus concealed gadget pocket on waistband
- Cordura reinforcement on key abrasion zones such as knees & pockets
- Nylon zip fly & plastic button closure
- All stress points bar-tacked & reinforced internal pocket bags



Y02210 LEGENDS XTREME CARGO PANT

SIZE

77R-112R, 74L-94L, 87S-117S
(L: NAB, KHB only)

COLOUR

NEW! Khaki/Black (KHB), Charcoal/Black (CHB),
Navy/Black (NAB)

FEATURES

- 340gsm, 100% cotton Panama weave with silicone wash
- Articulated fit for comfort & freedom of movement
- Cordura reinforcement on key abrasion zones such as knees & pockets
- Swing away pockets multiply storage for easy access to tools



Y02188 LEGENDS 3D STRETCH CARGO PANT

SIZE

77R-112R

COLOUR

NEW! Khaki/Black (KHB), NEW! Plum/Black (PBK),
Navy/Black (NAB), Black/Black (BBC)

FEATURES

- 300gsm, 89% cotton/9% polyester/2% elastane dobby
- Front hand pockets feature wide openings for convenience
- Articulated legs with reinforced knees plus provision for knee pads
- High abrasion zones reinforced from upper thigh to knee
- Triple stitched inleg, front and back crotch seams



Y03019 LEGENDS 3D STRETCH CARGO JEAN

SIZE

77R-112R

COLOUR

Blue/Charcoal (BUB), Black/Black (BBC)

FEATURES

- 365gsm, 99% cotton/1% elastane denim
- Stretch for comfort & ease of movement
- Articulated to fit you better
- Plenty of pockets for storing all the tools of the trade
- Reinforced knees with knee pad provisions



Y03041 LEGENDS CARGO JEAN

SIZE

77R-112R, 87S-117S

COLOUR

Blue/Charcoal (BUB), Black/Black (BBC)

FEATURES

- 440gsm, 100% cotton denim
- Super tough with triple stitching for reinforcement
- Heavy duty denim
- Reinforced knees include provision for knee pads





Y05066 LEGENDS CARGO SHORT

SIZE

77R-112R

COLOUR

Khaki (KHA), Khaki/Charcoal (KHC), Green (GRN), Navy (NAV), Black (BLA)

FEATURES

- 340gsm, 100% cotton Panama weave with silicone wash
- Cordura reinforcement for extra toughness
- Straight fit, above the knee length
- Ruler pocket specifically designed to prevent the ruler from digging into the back of the leg



ORIGINAL
LEGENDS
FIT AND
DESIGN

Y05906 LEGENDS EXTRA LIGHT CARGO SHORT

SIZE

77R-112R

COLOUR

Khaki (KHA), Navy (NAV)

FEATURES

- 260gsm, 100% cotton duck weave & lightly washed pre-shrunk canvas
- Cargo pockets for mobile phone
- Ruler pocket with extra tool & pencil partition, plus concealed gadget pocket on waistband
- Reinforcements with Cordura patches
- Nylon zip fly & plastic button closure
- All stress points bar-tacked & heavyweight poly cotton pocketing



Y05083 LEGENDS XTREME CARGO SHORT

SIZE

77R-112R

COLOUR

Khaki/Black (KHB), Charcoal/Black (CHB), Navy/Black (NAB)

FEATURES

- 340gsm, 100% cotton Panama weave with silicone wash
- Swing away pockets that function like a tool belt - without the belt
- Straight fit, above the knee length
- Cargo pocket, plus dedicated pockets for mobile phone, pen and ruler storage



Y05036 LEGENDS 3D STRETCH CARGO SHORT

SIZE

77R-112R

COLOUR

Khaki/Black (KHB), Navy/Black (NAB), Black/Black (BBC)

FEATURES

- 300gsm, 89% cotton/9% polyester/2% elastane dobby
- Stretch for comfort and mobility
- Above the knee length
- Features multiple utility pockets for all your storage needs
- Reinforced in high abrasion zones plus durable triple stitched inleg, front and back crotch seams for protection against wear and tear



Y05038 LEGENDS 3D STRETCH SHORT

SIZE

77R-112R

COLOUR

Khaki/Black (KHB), Navy/Black (NAB), Black/Black (BBC)

FEATURES

- 300gsm, 89% cotton/9% polyester/2% elastane dobby
- Features stretch for ease of movement
- Upper thigh length
- Front pockets with wide opening and rear reinforced pockets
- Reinforced on high abrasion zones to minimise wear and tear





Y07393 LEGENDS RIPSTOP SHORT SLEEVE SHIRT

SIZE

S-4XL

COLOUR

Khaki (KHA), NEW! Charcoal (CHA), Navy (NAV)

FEATURES

- 190gsm, 100% cotton ripstop
- Durable but lightweight, cotton ripstop is tough for work but breathable for comfort
- Double layer fabric provides reinforcement where you need it
- Twin needle stitching and bar tacked stress points for toughness
- Phone pocket with secure closure



Y07419 LEGENDS RIPSTOP LONG SLEEVE SHIRT

SIZE

S-4XL

COLOUR

Khaki (KHA), NEW! Charcoal (CHA), Navy (NAV)

FEATURES

- 190gsm, 100% cotton ripstop
- Durable but lightweight, cotton ripstop is tough for work but breathable for comfort
- Double layer fabric provides reinforcement where you need it
- Twin needle stitching and bar tacked stress points for toughness
- Phone pocket with secure closure
- Roll up sleeve with button tab for convenience and cooling



Y06585 LEGENDS POLAR FLEECE JACKET

SIZE

S-3XL

COLOURS

Charcoal Marle/Black (CHB)

FEATURES

- 300gsm, 100% polyester low pill polar fleece with 100% nylon reinforcement
- Chest pocket with pen partition on wearer's left hand side
- Front welt pockets and zip closure
- Reinforced sleeves and other areas for durability
- Internal chest patch pocket on wearer's right hand side
- Adjustable shock cord on hem for a customised fit



Y04203 LEGENDS 3D STRETCH SHORT SLEEVE SHIRT

SIZE

S-2XL

COLOUR

Khaki/Black (KHB), Navy/Black (NAB)

FEATURES

- 165gsm, 75% cotton/23% nylon/2% elastane
- Nylon stretch reinforcement
- Slim fit through the body with back pleat for ease of movement
- Reinforced in multiple high abrasion zones offering protection from wear and tear
- Button up chest pockets featuring a practical pen partition



Y04202 LEGENDS 3D STRETCH LONG SLEEVE SHIRT

SIZE

S-2XL

COLOUR

Khaki/Black (KHB), Navy/Black (NAB)

FEATURES

- 165gsm, 75% cotton/23% nylon/2% elastane
- Nylon stretch reinforcement
- Slim fit flatters the body with a back pleat to allow for ease of movement
- Wear and tear is minimised with reinforcement in multiple high abrasion zones
- Never misplace your tools or pen again with the button up chest pockets



Y06560 LEGENDS JACKET

SIZE

S-3XL

COLOURS

NEW! Khaki/Charcoal (KHC), NEW! Black/Black (BBC)

FEATURES

- 340gsm, 100% cotton Panama weave
- Cotton brushed lining
- Durable Water Repellent (DWR) finish to keep you dry
- Full centre zip with storm flap
- Tough metal zip snaps and rivets
- Chest pockets with reinforcement
- Front pockets with top and side entry: top for secure storage, side for hand warming
- Internal chest pocket on wearer's left hand side
- Reinforced elbows for durability



Hard Yakka
Nothing's Tougher.

LEGENDS

**LEGENDARY
WORKWEAR**
NOW EVEN
TOUGHER

A man with light brown hair and a beard, wearing a bright yellow short-sleeved high-visibility shirt with dark blue accents on the collar and cuffs, is working on a large, curved metal structure. He is looking down at his work with a focused expression. The background is a bright, overexposed outdoor area, possibly a ship's deck or a large industrial facility, with a concrete floor and a distant horizon line. The lighting is strong, suggesting a sunny day.

Hard Yakka

KOOLGEAR

KOOLING INNOVATION

Naturally breathable and lightweight 100% cotton twill 145gsm.

Fade Shade Indicator (Patent Approved) – serves as an indicator only for Hi Visibility non compliance*.



Ventilation in 3 high heat zones – underarm, side body & back body for the ultimate in comfort.

100% polyester mesh with antimicrobial finish to fight odour causing bacteria – lightweight & quick drying. Features a cool grey contrast colour on khaki and navy shirts, hi-vis shirts feature matching mesh colour.

Chest pockets with pen partition to meet storage needs.

Koolgear loses none of Hard Yakka's famous durability and toughness.

- Y07740 features lightweight, durable and naturally breathable 145gsm 100% cotton twill.
- UPF 50+ rating, offering excellent protection.
- Two chest pockets with top flap.
- Available in sizes S-5XL.



Y02275 KOOLGEAR VENTILATED PANT

SIZE

72R-112R, 74L-94L, 87S-132S

COLOUR

Khaki (KHA), Green (GRN), Navy (NAV)

FEATURES

- 235gsm, 100% cotton
- Cotton is naturally breathable and durable
- 100% polyester mesh with antimicrobial treatment to fight odour causing bacteria
- Reinforced, mesh lined pocket bags for added comfort without added weight
- Multiple pockets for storage requirements
- Ventilation in three high heat zones - back yoke, back knee and crotch
- Improved relaxed fit with articulation through the knee
- Cool grey colour mesh



Y02300 KOOLGEAR VENTILATED CARGO PANT

SIZE

72R-112R, 74L-94L, 87S-132S

COLOUR

Khaki (KHA), NEW! Charcoal (CHA), Navy (NAV)

FEATURES

- 235gsm, 100% cotton
- Cotton is naturally breathable and durable
- 100% polyester mesh with antimicrobial treatment to fight odour causing bacteria
- Reinforced, mesh lined pocket bags for added comfort without added weight
- Multiple pockets for storage requirements including cargo pockets
- Ventilation in three high heat zones - back yoke, back knee and crotch
- Improved relaxed fit with articulation through the knee
- Cool grey colour mesh



Y05140 KOOLGEAR VENTILATED CARGO SHORT

SIZE

72R-112R

COLOUR

Khaki (KHA), NEW! Charcoal (CHA), Navy (NAV)

FEATURES

- 235gsm, 100% cotton
- Cotton is naturally breathable and durable
- 100% polyester mesh with antimicrobial treatment to fight odour causing bacteria
- Reinforced, mesh lined pocket bags for added comfort without added weight
- Multiple pockets for storage requirements
- Ventilation in high heat zones - back yoke and crotch
- Cool grey colour mesh



Y07720 KOOLGEAR VENTILATED LONG SLEEVE SHIRT

SIZE

S-5XL

COLOUR

Safety Orange (SOR), Khaki (KHA), Navy (NAV)

FEATURES

- 145gsm, 100% cotton
- Cotton is naturally breathable and durable
- 100% polyester mesh with antimicrobial finish
- Chest pockets with pen partition for storage
- Ventilation at underarm, side body and back body
- Cool grey mesh contrast (excluding Safety Orange)
- Fade Shade Indicator for high visibility non-compliance*



*Hi Vis day compliant (Orange only)

*Serves as an indicator only for High Visibility non compliance



Y07715 KOOLGEAR VENTILATED SHORT SLEEVE SHIRT

SIZE

S-5XL

COLOUR

Khaki (KHA), Navy (NAV)

FEATURES

- 145gsm, 100% cotton
- Cotton is naturally breathable and durable
- 100% polyester mesh with antimicrobial finish
- Chest pockets with pen partition for storage
- Ventilation at underarm, side body and back body
- Cool grey mesh contrast





Y07558 KOOLGEAR HI-VISIBILITY TWO TONE COTTON TWILL VENTILATED SHIRT LONG SLEEVE

SIZE

S-5XL

COLOUR

Orange/Navy (ONA), Yellow/Navy (YNA), Yellow/Green (YGR)

FEATURES

- 145gsm, 100% cotton twill
- 200gsm, cotton mesh
- Vented back yoke & shoulders
- Underarm cotton mesh vents
- Two button down chest pockets
- Pen partition in left pocket



#UPF protection 50+ body fabric only excluding trims and underarm mesh panels



Y07978 KOOLGEAR HI-VISIBILITY TWO TONE COTTON TWILL VENTILATED SHIRT WITH TAPE LONG SLEEVE

SIZE

S-5XL

COLOUR

Orange/Navy (ONA), Yellow/Navy (YNA)

FEATURES

- 145gsm, 100% cotton twill
- 200gsm, cotton mesh
- 50mm reflective tape
- Vented back yoke & shoulders
- Underarm cotton mesh vents
- Two button down chest pockets
- Pen partition in left pocket



#UPF protection 50+ body fabric only excluding trims and underarm mesh panels

**HARD YAKKA
KOOLGEAR HAS
BEEN SPECIFICALLY
DESIGNED
TO COMBAT
HEAT STRESS**



Y07559 KOOLGEAR HI-VISIBILITY TWO TONE COTTON TWILL VENTILATED SHIRT SHORT SLEEVE

SIZE

S-5XL

COLOUR

Orange/Navy (ONA), Yellow/Navy (YNA)

FEATURES

- 145gsm, 100% cotton twill
- 200gsm, cotton mesh
- Vented back yoke & shoulders
- Underarm cotton mesh vents
- Two button down chest pockets
- Pen partition in left pocket



#UPF protection 50+ body fabric only excluding trims and underarm mesh panels



Y07996 KOOLGEAR HI-VISIBILITY COTTON TWILL VENTILATED SHIRT WITH TAPE LONG SLEEVE

SIZE

S-5XL

COLOUR

Safety Orange (SOR), Navy (NAV)

FEATURES

- 145gsm, 100% cotton twill
- 200gsm, cotton mesh
- 50mm reflective tape
- Vented back yoke & shoulders
- Underarm cotton mesh vents
- Two button down chest pockets
- Pen partition in left pocket



#UPF protection 50+ body fabric only excluding trims and underarm mesh panels

*Safety Orange only: complies with AS/NZS 4602.1:2011 High-Visibility Safety Garments Class Day/Night

*Navy only: complies with AS/NZS 4602.1:2011 High-Visibility Safety Garments Class Night



Y07730 KOOLGEAR HI-VISIBILITY TWO TONE VENTILATED LONG SLEEVE SHIRT

SIZE

S-5XL

COLOUR

Orange/Navy (ONA), Yellow/Navy (YNA), Yellow/Green (YGR)

FEATURES

- 145gsm, 100% cotton
- Cotton is naturally breathable and durable
- 100% polyester mesh with antimicrobial finish
- Chest pockets with pen partition for storage
- Ventilation at underarm, side body and back body
- Mesh colour matching hi-visibility colour
- Fade Shade Indicator for high visibility non-compliance*



* Serves as an indicator only for High Visibility non compliance



Y07740 KOOLGEAR HI-VISIBILITY TWO TONE VENTILATED LONG SLEEVE SHIRT WITH TAPE

SIZE

S-5XL

COLOUR

Orange/Navy (ONA), NEW! Yellow/Charcoal (YCH), Yellow/Green (YGR), Yellow/Navy (YNA)

FEATURES

- 145gsm, 100% cotton
- Cotton is naturally breathable and durable
- 100% polyester mesh with antimicrobial finish
- Chest pockets with pen partition for storage
- Ventilation at underarm, side body and back body
- Mesh colour matching hi-visibility colour
- ReflecTec 50mm reflective tape
- Fade Shade Indicator for high visibility non-compliance*



* Serves as an indicator only for High Visibility non compliance



Y07745 KOOLGEAR VENTILATED LONG SLEEVE SHIRT WITH TAPE

SIZE

S-5XL

COLOUR

Safety Orange (SOR), Navy (NAV)

FEATURES

- 145gsm, 100% cotton
- Cotton is naturally breathable and durable
- 100% polyester mesh with antimicrobial finish
- Chest pockets with pen partition for storage
- Ventilation at underarm, side body and back body
- Mesh colour to match garment main colour
- ReflecTec 50mm reflective tape
- Fade Shade Indicator for high visibility non-compliance*



*Serves as an indicator only for Hi Visibility non compliance

^Safety Orange only: complies with AS/NZS 4602.1:2011

High-Visibility Safety Garments Class Day/Night

*Navy only: complies with AS/NZS 4602.1:2011 High-Visibility Safety Garments Class Night



Y07725 KOOLGEAR HI-VISIBILITY TWO TONE VENTILATED SHORT SLEEVE SHIRT

SIZE

S-5XL

COLOUR

Orange/Navy (ONA), Yellow/Green (YGR), Yellow/Navy (YNA)

FEATURES

- 145gsm, 100% cotton
- Cotton is naturally breathable and durable
- 100% polyester mesh with antimicrobial finish
- Chest pockets with pen partition for storage
- Ventilation at underarm, side body and back body
- Mesh colour matching hi-visibility colour
- Fade Shade Indicator for high visibility non-compliance*



* Serves as an indicator only for High Visibility non compliance



Y07735 KOOLGEAR HI-VISIBILITY TWO TONE VENTILATED SHORT SLEEVE SHIRT WITH TAPE

SIZE

S-5XL

COLOUR

Orange/Navy (ONA), Yellow/Navy (YNA)

FEATURES

- 145gsm, 100% cotton
- Cotton is naturally breathable and durable
- 100% polyester mesh with antimicrobial finish
- Chest pockets with pen partition for storage
- Ventilation at underarm, side body and back body
- Mesh colour matching hi-visibility colour
- ReflecTec 50mm reflective tape
- Fade Shade Indicator for high visibility non-compliance*



* Serves as an indicator only for High Visibility non compliance



Y11389 KOOLGEAR HI-VISIBILITY TWO TONE LONG SLEEVE VENTILATED POLO

SIZE

XS-5XL

COLOUR

Orange/Dark Navy (ODN), Lemon/Dark Navy (LDN), Yellow/Green (YGR)

FEATURES

- 185gsm, 55% cotton/45% polyester micromesh
- 100% polyester grid knit mesh with antimicrobial finish for venting
- Regular fit through body with raglan seams for comfort and movement
- Main body fabric is soft, light and naturally breathable
- Mesh inserts for venting on high heat zones – side body, back, underarms and back collar
- Secure chest pocket with mesh lining to aid venting
- Extended placket opening for extra venting



Y11379 KOOLGEAR HI-VISIBILITY TWO TONE LONG SLEEVE VENTILATED POLO WITH SEGMENTED TAPE

SIZE

XS-5XL

COLOUR

Orange/ Dark Navy (ODN), Lemon/Dark Navy (LDN)

FEATURES

- 185gsm, 55% cotton/45% polyester micromesh
- 100% polyester grid knit mesh with antimicrobial finish for venting
- Regular fit through body with raglan seams for comfort and movement
- Main body fabric is soft, light and naturally breathable
- Mesh inserts for venting on high heat zones – side body, back, underarms and back collar
- Segmented ReflecTec 50mm reflective tape allows for stretch and movement while keeping you safe and visible
- Secure chest pocket with mesh lining to aid venting
- Extended placket opening for extra venting



Y11890 KOOLGEAR LONG SLEEVE VENTILATED POLO

SIZE

S-3XL

COLOUR

Navy (NAV)

FEATURES

- 185gsm, 55% cotton/45% polyester micromesh
- 100% polyester grid knit mesh with antimicrobial finish for venting
- Soft, light and naturally breathable main fabric
- Mesh inserts for venting on high heat zones – side body, back, underarms and back collar
- Secure chest pocket with mesh lining to aid ventilation
- Extended placket opening for extra ventilation



Y11396 KOOLGEAR HI-VISIBILITY TWO TONE SHORT SLEEVE VENTILATED POLO

SIZE

XS-5XL

COLOUR

Orange/Dark Navy (ODN), Lemon/Dark Navy (LDN), Yellow/Green (YGR)

FEATURES

- 185gsm, 55% cotton/45% polyester micromesh
- 100% polyester grid knit mesh with antimicrobial finish for venting
- Regular fit through body with raglan seams for comfort and movement
- Main body fabric is soft, light and naturally breathable
- Mesh inserts for venting on high heat zones – side body, back, underarms and back collar
- Secure chest pocket with mesh lining to aid venting
- Extended placket opening for extra venting



Y11383 KOOLGEAR HI-VISIBILITY TWO TONE SHORT SLEEVE VENTILATED POLO WITH SEGMENTED TAPE

SIZE

XS-5XL

COLOUR

Orange/ Dark Navy (ODN), Lemon/Dark Navy (LDN)

FEATURES

- 185gsm, 55% cotton/45% polyester micromesh
- 100% polyester grid knit mesh with antimicrobial finish for venting
- Regular fit through body with raglan seams for comfort and movement
- Main body fabric is soft, light and naturally breathable
- Mesh inserts for venting on high heat zones – side body, back, underarms and back collar
- Segmented ReflecTec 50mm reflective tape allows for stretch and movement while keeping you safe and visible
- Secure chest pocket with mesh lining to aid venting
- Extended placket opening for extra venting



Y11830 KOOLGEAR SHORT SLEEVE VENTILATED POLO

SIZE

S-3XL

COLOUR

Navy (NAV)

FEATURES

- 185gsm, 55% cotton/45% polyester micromesh
- 100% polyester grid knit mesh with antimicrobial finish for venting
- Soft, light and naturally breathable main fabric
- Mesh inserts for venting on high heat zones – side body, back, underarms and back collar
- Secure chest pocket with mesh lining to aid ventilation
- Extended placket opening for extra ventilation



Hard Yakka



3056- BORN IN
BRUNSWICK

WORKWEAR WITH A STREET EDGE

240gsm, 60% cotton /
38% polyester /
2% elastane blend
ripstop.

Reinforced internal
pocket bags.

Tough, durable metal zipper,
tack buttons and rivets.

New, slim & articulated fit,
tapered from knee to hem.

Seasonal colour highlights
on internal waistband &
hem binding, delivering a
fresh, new feel.

Herringbone trim
on welt pockets.

3056 branded
trims and labelling.

Multiple pockets to
accommodate a wide
range of storage needs,
including front and back
hip pockets, coin pocket,
cargo pockets featuring
additional ruler & smart
phone pockets.

3056 features the legendary toughness you know you can expect from Hard Yakka – with street inspired styling.

- Y02255 features 240gsm 60% cotton/38% polyester/2% elastane ripstop fabric.

- UPF 50+ rating delivering excellent protection.
- Available in sizes 72R-102R.



Y02255 3056 CARGO PANT

SIZE

72R-102R

COLOUR

NEW! Desert (DST), Military Green (MLG), Charcoal (CHA), Navy (NAV)

FEATURES

- 240gsm, 60% cotton/38% polyester/2% elastane blend ripstop
- Reinforced internal pocket bags
- Durable, tough metal zipper, tack button and rivets
- New, slim and articulated fit, tapered from knee to hem
- Seasonal colour highlights on internal waistband and hem binding
- Herringbone trim on welt pockets
- 3056 branded trims and labelling
- Multiple pockets for all storage needs



Y03048 DENIM JEAN

SIZE

77R-107R

COLOUR

Dark Indigo (DKI), NEW! Black (BLA)

FEATURES

- 13.3oz, 60% cotton/38% polyester/2% elastane stretch denim
- Articulated fit for freedom of movement
- Built in stretch
- Oversized back pockets
- Knees with double layer reinforcement
- Multiple utility pockets
- Triple stitched seams and bar tacks on stress points
- Button fly front
- In-leg gusset for comfort



Y05037 DENIM SHORT

SIZE

77R-107R

COLOUR

Dark Indigo (DKI)

FEATURES

- 13.3oz, 60% cotton/38% polyester/2% elastane stretch denim
- Articulated fit for freedom of movement
- Reinforced, oversized back pockets
- Multiple utility pockets
- Triple stitched seams and bar tacks on stress points
- Button fly front
- In leg gusset for comfort



Y05100 3056 CARGO SHORT

SIZE

72R-102R

COLOUR

NEW! Desert (DST), Military Green (MLG), Charcoal (CHA), Navy (NAV)

FEATURES

- 240gsm, 60% cotton/38% polyester/2% elastane blend ripstop
- Reinforced internal pocket bags
- Durable, tough metal zipper, tack button and rivets
- Seasonal colour highlights on internal waistband and hem binding
- Herringbone trim on welt pockets
- 3056 branded trims and labelling
- Multiple pockets for all storage needs
- Above the knee length



Y05115 3056 SHORT

SIZE

72R-102R

COLOUR

NEW! Desert (DST), Military Green (MLG), Charcoal (CHA), Navy (NAV)

FEATURES

- 240gsm, 60% cotton/38% polyester/2% elastane blend ripstop
- Reinforced internal pocket bags
- Durable, tough metal zipper, tack button and rivets
- Seasonal colour highlights on internal waistband and hem binding
- Herringbone trim on welt pockets
- 3056 branded trims and labelling
- Multiple pockets for all storage needs
- Upper thigh length



Y11525 CAMO GRAPHIC TEE

SIZE

S-XL

COLOUR

Grey Marle (GMR), Army Green (ARG), Black Marle (BAM)

FEATURES

- 190gsm, 65% polyester/35% cotton single jersey
- Limited edition Hard Yakka geometric camouflage print
- 3056 branded labelling and packaging
- Seasonal colour highlights on back neck, shoulder binding and stitching
- Casual fit featuring slight curve to hemline





Y07333 DENIM SHIRT

SIZE

S-2XL

COLOUR

Indigo (IND)

FEATURES

- 5.6oz, 98% cotton/2% elastane, stretch denim
- Narrow fit shirt with stretch
- Multiple utility pockets including oversized chest pockets with side entry and pen partition on wearer's left hand side
- Reinforcements on lower section of pockets & on shoulders & elbows
- Front press studs with matt white finish
- Additional stud on sleeve placket to prevent catch hazards
- Splits at side of shirt for ease of movement
- Triple stitched seams



UPF RATING
EXCELLENT
50+



TRIPLE
STITCHING



STRETCH
FABRIC



Y06575 3056 BOMBER JACKET

SIZES

S-2XL

COLOURS

Black (BLA)

FEATURES

- 270gsm, 100% cotton canvas
- Durable Water Repellent (DWR) finish to keep you dry
- Quilted grid lining for warmth
- Front utility pockets with two way access via top and side: top for secure storage, side for warmth
- Internal chest pocket
- Durable YKK zip and metal hardware including zips & snap buttons
- Feature zip with zip pull and pen pocket on sleeve



UPF RATING
EXCELLENT
50+



DURABLE
WATER
REPELLENT



Hard Yakka



WOMEN'S

WOMEN'S WORKWEAR

Naturally breathable and lightweight 100% cotton twill 145gsm.

Fade shade indicator (patent approved) serves as an indicator only for hi-visibility non-compliance*



Chest pockets with pen partition to meet storage needs.

Ventilation in 3 high heat zones - underarm, side body & back body for the ultimate in comfort.

100% Polyester mesh with antimicrobial finish to fight odour causing bacteria - lightweight and quick drying. Features matching colour mesh.

All the features and durability you've come to expect from Hard Yakka - with a fit tailored for women.

- Y08220 features naturally breathable and lightweight 145gsm 100% cotton twill.

- UPF 50+ offering excellent protection.
- Available in sizes 8-22.



Y08810 WOMEN'S FOUNDATIONS DRILL PANT

SIZE

8-22

COLOUR

Navy (NAV)

FEATURES

- 310gsm, preshrunk 100% cotton drill
- Red internal waistband binding and stitching
- Reinforced internal pocket bags with signature pocket bag print
- Improved relaxed women's fit
- Updated trims
- Multiple pockets for all storage needs



Y08850 WOMEN'S FOUNDATIONS DRILL CARGO PANT

SIZE

8-22

COLOUR

Navy (NAV), Black (BLA)

FEATURES

- 310gsm, preshrunk 100% cotton drill
- Red internal waistband binding and stitching
- Reinforced internal pocket bags with signature pocket bag print
- Improved relaxed women's fit
- Updated trims
- Multiple pockets for all storage needs



Y08130 WOMEN'S KOOLGEAR VENTILATED CARGO PANT

SIZE

8-22

COLOUR

Charcoal (CHA), Navy (NAV)

FEATURES

- 235gsm, 100% cotton dobby
- Cotton is naturally breathable and durable
- 100% polyester mesh with antimicrobial treatment to fight odour causing bacteria
- Reinforced, mesh lined pocket bags for added comfort without added weight
- Multiple pockets for storage requirements
- Ventilation in two high heat zones - back yoke and back knee
- Improved relaxed women's fit with articulation through the knee
- Cool grey colour mesh



Y08079 WOMEN'S LEGENDS CARGO PANT

SIZE

8-20

COLOUR

Khaki (KHA), Green (GRN), Navy (NAV), Black (BLA)

FEATURES

- 340gsm, 100% cotton Panama weave with silicone wash
- Articulated shape means the pants move with you
- Super tough with reinforcement and triple stitching where you need it most - these pants will stand the test of time
- Multiple pockets have every storage requirement covered - never misplace your phone, ruler or pen again



Y08887 WOMEN'S PERMANENT PRESS POLY VISCOSE PANT WITH ADJUSTABLE WAISTBAND

SIZE

8-24

COLOUR

Midnight (MDN)

FEATURES

- 245gsm, 80% polyester/20% viscose fabric with Bionic Finish
- Plain front with invisible expandable waistband
- Fob pocket
- Two side pockets
- Nylon zip fly & plastic button front



Y03042 WOMEN'S 14 1/2 OZ STRETCH DENIM JEAN

SIZE

8-22

COLOUR

Navy (NAV)

FEATURES

- 425gsm, 98% cotton/2% elastomer denim
- Lightly washed
- Classic stretch women's fit
- Straight leg with five pocket styling
- All stress points bar-tacked & riveted for extra strength
- Heavy-duty metal zip & stud button closure





Y08851 WOMEN'S FOUNDATIONS DRILL CARGO SHORT

SIZE

8-22

COLOUR

Navy (NAV), Black (BLA)

FEATURES

- 310gsm, preshrunk 100% cotton drill
- Red internal waistband binding and stitching
- Reinforced internal pocket bags with signature pocket bag print
- Improved relaxed women's fit
- Updated trims
- Multiple pockets for all storage needs



Y08180 WOMEN'S KOOLGEAR VENTILATED CARGO SHORT

SIZE

8-22

COLOUR

Charcoal (CHA), Navy (NAV)

FEATURES

- 235gsm, 100% cotton dobby
- Cotton is naturally breathable and durable
- 100% polyester mesh with antimicrobial treatment to fight odour causing bacteria
- Reinforced, mesh lined pocket bags for added comfort without added weight
- Multiple pockets for storage requirements
- Ventilation in high heat zone - back yoke
- Cool grey colour mesh



Y08106 WOMEN'S LEGENDS CARGO SHORT

SIZE

8-20

COLOUR

Khaki (KHA), Navy (NAV)

FEATURES

- 340gsm, 100% cotton Panama weave with silicone wash
- Straight fit, above the knee length
- Ruler pocket specifically designed to prevent the ruler digging into the back of the leg
- Reinforced for extra toughness



Y08888 WOMEN'S PERMANENT PRESS POLY VISCOSE SHORT WITH ADJUSTABLE WAISTBAND

SIZE

8-22

COLOURS

Midnight (MDN)

FEATURES

- 245gsm, 80% polyester/20% viscose fabric
- Bionic finish and stain release
- Plain front permanent press with invisible expandable waistband
- Fob pocket
- Two side pockets
- Nylon zip fly & plastic button closure



OUR WOMEN'S WORKWEAR FEATURES EVERYTHING YOU'VE COME TO KNOW AND EXPECT FROM HARD YAKKA - WITH A FIT TAILORED FOR WOMEN



Y08069 WOMEN'S COTTON DRILL LONG SLEEVE SHIRT

SIZE

8-22

COLOUR

Khaki (KHA), Navy (NAV)

FEATURES

- 185gsm, preshrunk 100% cotton drill
- Two piece collar
- Pleated back
- Two secure chest pockets
- Full open front closure
- Improved women's fit with darted waist for shape



Y08068 WOMEN'S COTTON DRILL SHORT SLEEVE SHIRT

SIZE

8-22

COLOUR

Khaki (KHA), Navy (NAV)

FEATURES

- 185gsm, preshrunk 100% cotton drill
- Two piece collar
- Pleated back
- Two secure chest pockets
- Full open front closure
- Improved women's fit with darted waist for shape





Y08040 WOMEN'S FOUNDATIONS CHAMBRAY LONG SLEEVE SHIRT

SIZE

8-22

COLOUR

Blue (BLU)

FEATURES

- 140gsm, 60% cotton/40% polyester with Stain Repellent finish
- Updated fit; shaping through the use of front and back waist darts
- 2 piece collar
- Pen partition
- Button front placket
- Double-layered shoulder yoke and back yoke
- Contrast red bar tacks on stress points



EASY CARE



STAIN REPELLENT



Y08220 WOMEN'S KOOLGEAR HI-VISIBILITY VENTILATED LONG SLEEVE SHIRT WITH TAPE

SIZE

8-22

COLOUR

Orange/Navy (ONA), Yellow/Navy (YNA)

FEATURES

- 145gsm, 100% cotton twill
- Cotton twill is naturally breathable and durable
- 100% polyester mesh with antimicrobial finish
- Chest pockets with pen partition for storage
- Ventilation at underarm, side body and back body
- Mesh colour matching garment hi-visibility colour
- ReflecTec 50mm reflective tape
- Tailored fit for women
- Fade Shade Indicator for high visibility non-compliance*



UPF RATING EXCELLENT 50+



COOLFLOW



HI-VISIBILITY DAY/NIGHT



MOISTURE MANAGEMENT



REFLECTEC

* Serves as an indicator only for Hi Visibility non compliance



Y11392 WOMEN'S KOOLGEAR HI-VISIBILITY TWO TONE VENTILATED LONG SLEEVE POLO

SIZE

2XS-2XL

COLOUR

Orange/Dark Navy (ODN), Lemon/Dark Navy (LDN)

FEATURES

- 185gsm, 55% cotton/45% polyester micromesh
- 100% polyester grid knit mesh with antimicrobial finish for venting
- Regular fit through body with raglan seams for comfort and movement
- Main body fabric is soft, light and naturally breathable
- Mesh inserts for venting at high heat zones - side body, underarms and back collar
- Secure chest pocket with mesh lining to aid venting
- Extended placket opening for extra venting



UPF RATING EXCELLENT 50+



COOLFLOW



HI-VISIBILITY DAY



MOISTURE MANAGEMENT



Y08041 WOMEN'S FOUNDATIONS CHAMBRAY SHORT SLEEVE SHIRT

SIZE

8-22

COLOUR

Blue (BLU)

FEATURES

- 140gsm, 60% cotton/40% polyester with Stain Repellent finish
- Updated fit; shaping through the use of front and back waist darts
- 2 piece collar
- Pen partition
- Button front placket
- Double-layered shoulder yoke and back yoke
- Contrast red bar tacks on stress points



EASY CARE



STAIN REPELLENT



Y08225 WOMEN'S KOOLGEAR HI-VISIBILITY VENTILATED LONG SLEEVE SHIRT

SIZE

8-22

COLOUR

Orange/Navy (ONA), Yellow/Navy (YNA)

FEATURES

- 145gsm, 100% cotton twill
- Cotton twill is naturally durable and breathable
- 100% polyester mesh with antimicrobial finish
- Chest pockets with pen partition for storage
- Ventilation at underarm, side body and back body
- Mesh colour matching garment hi-visibility colour
- Tailored fit for women
- Fade Shade Indicator for high visibility non-compliance*



UPF RATING EXCELLENT 50+



COOLFLOW



MOISTURE MANAGEMENT



HI-VISIBILITY DAY



Y11399 WOMEN'S KOOLGEAR HI-VISIBILITY TWO TONE VENTILATED SHORT SLEEVE POLO

SIZE

2XS-2XL

COLOUR

Orange/Dark Navy (ODN), Lemon/Dark Navy (LDN)

FEATURES

- 185gsm, 55% cotton/45% polyester micromesh
- 100% polyester grid knit mesh with antimicrobial finish for venting
- Regular fit through body with raglan seams for comfort and movement
- Main body fabric is soft, light and naturally breathable
- Mesh inserts for venting at high heat zones - side body, underarms and back collar
- Secure chest pocket with mesh lining to aid venting
- Extended placket opening for extra venting



UPF RATING EXCELLENT 50+



COOLFLOW



HI-VISIBILITY DAY



MOISTURE MANAGEMENT

Hard Yakka



SHIELDTEC FR



**SHIELD
TEC FR**

SHIELDTEC FLAME RESISTANT (FR)



Lightweight flame resistant range of shirts to reduce risk from Arc and Flash fire events.

- Y04350 features a lightweight 195gsm (Protex®) Modacrylic/Pima Cotton/(Kevlar®) Para-Aramid/Nylon/(Beltron®) Anti-static fibre
- Anti-static fibre, intimately blended
- Ripstop fabric increases durability
- Two chest pockets with reinforcement
- Gusset cuff for protection
- Pleated yoke, side body gusset plus articulated sleeves for movement
- Heat resistant trims tested to 260°C
- FR ReflecTec tape – hoop configuration
- FR Properties do not wash out
- Size range: S-5XL

See page 59 for details.

SHIELDTEC FR ICONS GUIDE



ANTI-STATIC

Designed to reduce the build up of excess static electricity. This offers a level of protection against ignition hazards such as flammable materials and gases.



ISO 11612:2015

Certified to Europe's ISO 11612:2015 Protective Clothing - Clothing to Protect Against Heat and Flame Standard.



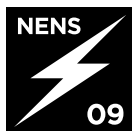
CAL 8.4

Protective value rating of ATPV 8.4 cal/cm² which meets NFPA 70E:2015, Category 2.



LIGHTWEIGHT FABRIC

Fabric is lightweight to keep you cool and comfortable.



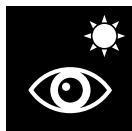
ENA NENS 09

ENA NENS 09 conforms to National Guidelines for the selection, use and maintenance of Personal Protective Equipment for Electrical Hazards.



MOISTURE MANAGEMENT

Fabrics designed to keep you dry and comfortable: moisture wicking, quick drying and breathable.



HI-VISIBILITY DAY

A garment that uses high-visibility materials for daytime use only. The high-visibility material must encircle the upper torso. Complies with AS/NZS 4602.1:2011 High-Visibility Safety Garments Class Day.



NFPA 70E:2015

Tested to the USA's NFPA 70E:2015 Electrical Safety in the Workplace Standard.



HI-VISIBILITY DAY/NIGHT

For use in day, night, dawn, dusk or in poor weather conditions where there is illumination from headlights. Complies with AS/NZS 4602.1:2011 High-Visibility Safety Garments Class Day/Night.



NFPA 2112:2012

Certified to the USA's NFPA 2112:2012 Flame-Resistant Garments for Protection of Industrial Personnel Against Flash Fire.



HI-VISIBILITY NIGHT

Garments designed for night use using retro reflected light. Complies with AS/NZS 4602.1:2011 High-Visibility Safety Garments Class Night.



UPF RATING

An Ultraviolet Protection Factor (UPF) rating for Ultraviolet Radiation transmitted through a fabric onto the skin. Look for garments with a UPF 40 or 50+ rating to be assured of excellent protection. Complies with AS/NZS 4399:1996 Sun Protection Clothing Classification.



Y04250 SHIELDTEC FR CLOSED FRONT LONG SLEEVE SHIRT

SIZE

S-5XL

COLOUR

Navy (NAV)

FEATURES

- 195gsm, Modacrylic/Pima Cotton/Para-Aramid/Nylon/Anti-static
- Lightweight flame resistant shirts to reduce risk from Arc and Flash fire events
- HRC/PPE2 with minimum 8.4 CAL
- Antistatic fibre, intimately blended
- Two chest pockets with reinforcement for durability
- Pleated yoke, side body gusset and articulated sleeve for movement
- Gusset cuff and concealed closed front for protection
- Certified trims tested to 260°C



Y04350 SHIELDTEC FR HI-VISIBILITY TWO TONE OPEN FRONT LONG SLEEVE SHIRT WITH FR TAPE

SIZE

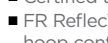
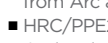
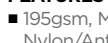
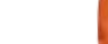
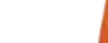
S-5XL

COLOUR

Orange/Navy (ONA), Yellow/Navy (YNA)

FEATURES

- 195gsm, Modacrylic/Pima Cotton/Para-Aramid/Nylon/Anti-static
- Lightweight flame resistant shirts to reduce risk from Arc and Flash fire events
- HRC/PPE2 with minimum 8.4 CAL
- Antistatic fibre, intimately blended
- Two chest pockets with reinforcement for durability
- Pleated yoke, side body and gusset and articulated sleeve for movement
- Gusset cuff for protection
- Certified trims tested to 260°C
- FR ReflecTec 50mm reflective tape - hoop configuration



Y04450 SHIELDTEC FR HI-VISIBILITY TWO TONE OPEN FRONT LONG SLEEVE SHIRT

SIZE

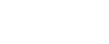
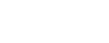
S-5XL

COLOUR

Orange/Navy (ONA), Yellow/Navy (YNA)

FEATURES

- 195gsm, Modacrylic/Pima Cotton/Para-Aramid/Nylon/Anti-static
- Lightweight flame resistant shirts to reduce risk from Arc and Flash fire events
- HRC/PPE2 with minimum 8.4 CAL
- Antistatic fibre, intimately blended
- Two chest pockets with reinforcement for durability
- Pleated yoke, side body and gusset and articulated sleeve for movement
- Gusset cuff for protection
- Certified trims tested to 260°C



Y04550 SHIELDTEC FR HI-VISIBILITY TWO TONE CLOSED FRONT LONG SLEEVE SHIRT WITH FR TAPE

SIZE

S-5XL

COLOUR

Orange/Navy (ONA), Yellow/Navy (YNA)

FEATURES

- 195gsm, Modacrylic/Pima Cotton/Para-Aramid/Nylon/Anti-static
- Lightweight flame resistant shirts to reduce risk from Arc and Flash fire events
- HRC/PPE2 with minimum 8.4 CAL
- Antistatic fibre, intimately blended
- Two chest pockets with reinforcement for durability
- Pleated yoke, side body and gusset and articulated sleeve for movement
- Gusset cuff for protection
- Certified trims tested to 260°C
- FR ReflecTec 50mm reflective tape - hoop configuration



Y04150 SHIELDTEC FR FULL HI-VISIBILITY CLOSED FRONT LONG SLEEVE SHIRT WITH FR TAPE

SIZE

S-5XL

COLOUR

Safety Orange (SOR)

FEATURES

- 195gsm, Modacrylic/Pima Cotton/Para-Aramid/Nylon/Anti-static
- Lightweight flame resistant shirts to reduce risk from Arc and Flash fire events
- HRC/PPE2 with minimum 8.4 CAL
- Antistatic fibre, intimately blended
- Two chest pockets with reinforcement for durability
- Pleated yoke, side body and gusset and articulated sleeve for movement
- Gusset cuff for protection
- Certified trims tested to 260°C
- FR ReflecTec 50mm reflective tape - hoop configuration





Y02420 SHIELDTEC FR FLAT FRONT PANT

SIZE

77R-112R, 87S-132S

COLOUR

Navy

FEATURES

- 235gsm, Modacrylic/Pima Cotton/Para-Aramid/Nylon/Anti-Static
- Flame resistant pants to reduce risk from Arc and Flash fire events
- HRC/PPE2 with minimum 8.4CAL
- Antistatic fibre, intimately blended
- Gusset inleg for fit and movement
- Articulated knees



Y02425 SHIELDTEC FR FLAT FRONT PANT WITH FR TAPE

SIZE

77R-112R, 87S-132S

COLOUR

Navy

FEATURES

- 235gsm, Modacrylic/Pima Cotton/Para-Aramid/Nylon/Anti-Static
- Flame resistant pants to reduce risk from Arc and Flash fire events
- HRC/PPE2 with minimum 8.4CAL
- Antistatic fibre, intimately blended
- Gusset inleg for fit and movement
- Articulated knees
- FR ReflecTec 50mm reflective tape - hoop configuration



Y02520 SHIELDTEC FR FLAT FRONT CARGO PANT

SIZE

77R-112R, 87S-132S

COLOUR

Navy

FEATURES

- 235gsm, Modacrylic/Pima Cotton/Para-Aramid/Nylon/Anti-Static
- Flame resistant pants to reduce risk from Arc and Flash fire events
- HRC/PPE2 with minimum 8.4CAL
- Antistatic fibre, intimately blended
- Gusset inleg for fit and movement
- Articulated knees
- Secure pockets for storage



Y02525 SHIELDTEC FR FLAT FRONT CARGO PANT WITH FR TAPE

SIZE

77R-112R, 87S-132S

COLOUR

Navy

FEATURES

- 235gsm, Modacrylic/Pima Cotton/Para-Aramid/Nylon/Anti-Static
- Flame resistant pants to reduce risk from Arc and Flash fire events
- HRC/PPE2 with minimum 8.4CAL
- Antistatic fibre, intimately blended
- Gusset inleg for fit and movement
- Articulated knees
- Secure pockets for storage
- FR ReflecTec 50mm reflective tape - hoop configuration



Y00055 SHIELDTEC FR HI-VISIBILITY TWO TONE COVERALL WITH FR TAPE

SIZE

77R-112R, 87S-132S

COLOUR

Orange/Navy (ONA), Yellow/Navy (YNA)

FEATURES

- Top half is 195gsm and lower half 235gsm
- Fabric Content: Modacrylic/Pima Cotton/Para-Aramid
- Flame resistant coverall to reduce risk from Arc and Flash fire events
- HRC/PPE2 with minimum 8.4CAL
- Inherently FR and intimately blended anti-static
- Coverall is ergonomically designed with articulated sleeves/legs and gussets designed to move with the body
- Radio loops on front shoulder seam
- FR ReflecTec 50mm reflective tape - hoop configuration





Y04050 WOMEN'S SHIELDTEC FR HI-VISIBILITY TWO TONE OPEN FRONT LONG SLEEVE SHIRT WITH FR TAPE

SIZE

8-18

COLOUR

Orange/Navy (ONA), Yellow/Navy (YNA)

FEATURES

- 195gsm, Modacrylic/Pima Cotton/Para-Aramid/Nylon/Anti-static
- Lightweight flame resistant shirts to reduce risk from Arc and Flash fire events
- HRC/PPE2 with minimum 8.4CAL
- Antistatic fibre, intimately blended
- Two chest pockets with reinforcement for durability
- Pleated yoke, side body gusset and articulated sleeve for movement
- Gusset cuff for protection
- Certified trims tested to 260°C
- FR ReflecTec 50mm reflective tape - hoop configuration



Y02320 WOMEN'S SHIELDTEC FR CARGO PANT WITH FR TAPE

SIZE

8-22

COLOUR

Navy

FEATURES

- 235gsm, Modacrylic/Pima Cotton/Para-Aramid/Nylon/Anti-Static
- Flame resistant pants to reduce risk from Arc and Flash fire events
- HRC/PPE2 with minimum 8.4CAL
- Antistatic fibre, intimately blended
- Gusset inleg for fit and movement
- Articulated knees
- Secure pockets for storage
- FR ReflecTec 50mm reflective tape - hoop configuration



Y02325 WOMEN'S SHIELDTEC FR FLAT FRONT PANT WITH FR TAPE

SIZE

8-22

COLOUR

Navy

FEATURES

- 235gsm, Modacrylic/Pima Cotton/Para-Aramid/Nylon/Anti-Static
- Flame resistant pants to reduce risk from Arc and Flash fire events
- HRC/PPE2 with minimum 8.4CAL
- Antistatic fibre, intimately blended
- Gusset inleg for fit and movement
- Articulated knees
- FR ReflecTec tape - hoop configuration



**SHIELDTEC FABRIC
IS INHERENTLY
FLAME RESISTANT
AND DOES NOT
WASH OUT**

Hard Yakka.

Hard Yakka.
Nothing's Tougher

Nothing's Tougher

ACCESSORIES

THE PROTECTIVE ARMOUR YOU NEED TO GET THE JOB DONE SAFELY.

Moulds to your knees –
making it comfortable
to wear

Able to be cut
down to size

Low density
Polyethylene/EVA
Contoured Knee Pads
– built to last longer

Versatility – suits
Legends range of
products including
men's & women's



- Y22980 features low density Polyethylene/EVA Contoured Knee Pads – built to last longer

- Size range: M (one size fits all)



Y26071 GOLDEN HAWK DEERGRAIN GLOVE

SIZE

S-2XL

COLOUR

Black/Yellow (G86)

FEATURES

- Gold deer grain
- Curved fingers with perforated fourchettes
- Black nylon, lycra, foam back
- Black neoprene knuckle bar
- Elastic cuff
- Velcro fastener



Y26073 GOLDEN HAWK WINTERLINED DEERGRAIN RIGGER

SIZE

S-2XL

COLOUR

Black/Yellow (G86)

FEATURES

- Gold deer grain
- Winterlined features W100 heatlock lining
- Curved fingers with perforated fourchettes
- Black nylon, lycra, foam back
- Black neoprene knuckle bar
- Elastic cuff
- Velcro fastener



Y26075 ARMORSKIN HAWK SYNTHETIC LEATHER GLOVE

SIZE

S-2XL

COLOUR

Ash/Black (747)

FEATURES

- 0.8mm Armorskin synthetic leather (polyurethane/nylon)
- Neoprene padded reinforcement
- Perforated fourchettes
- Black nylon/lycra, foam back
- Elastic cuff
- Velcro fastener



Y26079 ARMORSKIN RIGGER SYNTHETIC LEATHER GLOVE

SIZE

S-2XL

COLOUR

Black/Smoke (610)

FEATURES

- 0.8mm Armorskin synthetic leather (polyurethane/nylon)
- Neoprene padded reinforcement
- Perforated fourchettes
- Black nylon/lycra, foam back
- Elastic cuff



Y26077 ARMORSKIN HAWK FINGERLESS SYNTHETIC LEATHER GLOVE

SIZE

S-2XL

COLOUR

Ash/Black (747)

FEATURES

- 0.8mm Armorskin synthetic leather (polyurethane/nylon)
- Neoprene padded reinforcement
- Perforated fourchettes
- Black nylon/lycra, foam back
- Elastic cuff
- Velcro fastener



Y26081 COWHIDE RIGGER

SIZE

S-XL

COLOUR

Natural (NAT)

FEATURES

- A-grade cowgrain leather
- Keystone thumb
- Insewn elastic
- Colour binding for sizing
- Outseam curved finger





Y20008 WOOL NYLON ARMY WORK SOCKS

SIZE

AUS/UK L (6-10), XL (11-14)

COLOUR

Khaki (KHA), Olive (OLI), Navy (NAV), Black (BLA)

FEATURES

- 75% wool/25% nylon
- Natural fibre content helps with comfort and moisture absorption
- Cushioned soles for greater comfort with 75% soft wool terylene knit
- Longer sock length
- Contoured knit top



Y20065 ACRYLIC NYLON TWIN PACK DEODORISED SOCKS

SIZE

AUS/UK L (6-10), XL (11-14)

COLOUR

Navy (NAV), Black (BLA)

FEATURES

- 80% acrylic/16% nylon/4% rubber
- Deodorised for freshness
- Cushioned soles for greater comfort
- Contoured knit top
- Contrast heel and toe design



Y20501 WOOL NYLON SOCKS

SIZE

AUS/UK L (6-10), XL (11-14)

COLOUR

Khaki (KHA), Navy (NAV), Black (BLA)

FEATURES

- 75% wool/18% nylon/4% elastane/3% rubber
- Natural fibre content helps with comfort and moisture absorption
- Loop back knit provides breathability
- Contrast heel and toe design for reinforcement for maximum comfort and durability



Y20100 BAMBOO WORK SOCKS

SIZE

6-10, 11-14

COLOUR

Navy, Black

FEATURES

- Australian Made
- A renewable resource
- Ultra-violet protective properties
- Breathable, assisting your feet stay cool and dry
- Superior comfort and softness



Y22980 LEGENDS SHAPED KNEEPADS

SIZE

M (one size fits all)

COLOUR

Black (BLA)

FEATURES

- Moulds to your knees - making it comfortable to wear
- Low density polyethylene/EVA contoured kneepads - built to last longer
- Tested to Australian standards - no damage to the knee pads after up to one million flexes
- Able to be cut down to size
- Versatile - suits Legends range of products including men's & women's





Y09402 LEATHER BELT

SIZE

72R-112R (117R & 122R available in Black only)

COLOUR

Chocolate (CHO), Black (BLA)

FEATURES

- Chocolate: Colorado oil tan leather & antique brass buckle
- Black: hand milled crazyhorse leather & satin nickel buckle
- Seven adjustable holes
- 35mm width
- Reinforced heavy duty stitching



Y22300 LEATHER BELT

SIZE

S, M, L

COLOURS

Black (BLA), Brown (BRO)

FEATURES

- Genuine leather belt
- Gun metal buckle with 8 eyelets
- Logo engraving on buckle



Y22420 3056 WEBBING BELT WITH EMBOSSED BUCKLE

SIZE

S, M, L

COLOURS

Black (BLA)

FEATURES

- 100% cotton (belt), copper (buckle)
- 3056 logo engraving on buckle
- Bottle opener on inside of buckle



Y22370 3056 BEANIE

SIZE

One Size Fits All

COLOURS

Grey Marle (GMR)

FEATURES

- 100% acrylic
- Leather look embossed 3056 patch label on front
- Snug fit with relaxed top
- Wide cuff



Y22330 FLEXFIT BASEBALL CAP

SIZE

One Size Fits All

COLOURS

Grey (GRY), Navy (NAV)

FEATURES

- Polyester/elastane
- 6 panel cap with taped seams
- Hard Yakka embroidery on wearer's left side
- Curved visor with contrast edge
- 6 sewn eyelets for ventilation



Y22375 REVERSIBLE HI-VIS BEANIE

SIZE

One Size Fits All

COLOURS

Military/Orange (MOR), Yellow/Black (YBL)

FEATURES

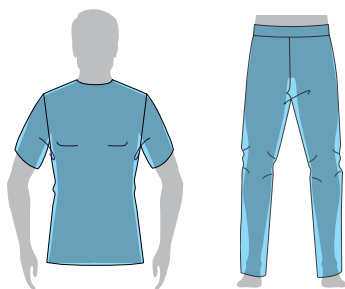
- 96% acrylic/4% spandex
- Reversible hi-vis beanie
- Features Hard Yakka branding





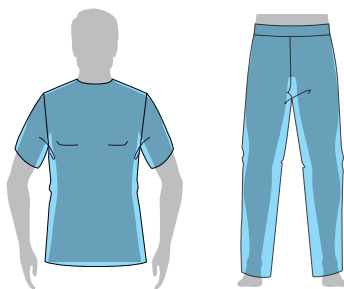
FITTING GUIDE

MEN'S														
SIZE: MENS PANT/SHORT - REGULAR	67R	72R	77R	82R	87R	92R	97R	102R	107R	112R	117R	122R		
SIZE: MENS PANT - STOUT					87S	92S	97S	102S	107S	112S	117S	122S	127S	132S
FITS WAIST (CM)	67	72	77	82	87	92	97	102	107	112	117	122	127	132
FITS WAIST (IN)	26	28	30	32	34	36	38	40	42	44	46	48	50	52
PANT IN LEG SEAM - REGULAR	83	83	83	83	83	83	83	83	83	83	83	83		
PANT IN LEG SEAM - STOUT					78	78	78	78	78	78	78	78	78	78
SIZE: MENS PANT - LONG		74L	79L	84L	89L	94L								
FITS WAIST (CM)		74	79	84	89	94								
FITS WAIST (IN)		29	31	33	35	37								
PANT IN LEG SEAM - LONG		88	88	88	88	88								
SIZE: MENS COVERALL - REGULAR	67R	72R	77R	82R	87R	92R	97R	102R	107R	112R	117R	122R		
SIZE: MENS COVERALL - STOUT					87S	92S	97S	102S	107S	112S	117S	122S	127S	132S
FITS WAIST (CM)	67	72	77	82	87	92	97	102	107	112	117	122	127	132
FITS WAIST (IN)	26	28	30	32	34	36	38	40	42	44	46	48	50	52
FITS CHEST - REGULAR (CM)	77	82	87	92	97	102	107	112	117	122	127	132		
FITS CHEST - STOUT (CM)					92	97	102	107	112	117	122	127	132	137
IN LEG SEAM - REGULAR	70	73	76	79	81	84	85	86	87	88	88	88	88	89
IN LEG SEAM - STOUT					71	74	76	79	81	82	83	85	86	86
SIZE: MENS COVERALL - LONG		74L	79L	84L	89L	94L								
FITS WAIST (CM)		74	79	84	89	94								
FITS WAIST (IN)		29	31	33	35	37								
FITS CHEST (CM)		87	92	97	102	107								
IN LEG SEAM - LONG		81	83	85	88	90								
SIZE: MENS SHIRTS/POLOS/TEES/FLEECE	XXS	XS	S	M	L	XL	2XL	3XL	4XL	5XL	6XL			
FITS CHEST (CM)	82	87	92	97	102	110	118	126	134	142	150			
WOMEN'S														
WOMENS PANT/SHORT/SHIRT		6	8	10	12	14	16	18	20	22	24			
FITS BUST		80	85	90	96	102	108	116	124	130	136			
FITS NATURAL WAIST (CM)		62	67	72	77	82	87	95	103	108	113			
FITS HIP		88	93	98	103	108	113	121	129	134	139			
WOMENS POLOS/TEES/FLEECE		2XS	XS	S	M	L	XL	2XL	3XL	4XL	5XL			
FITS BUST		80	85	90	98	106	114	122	130	138	146			



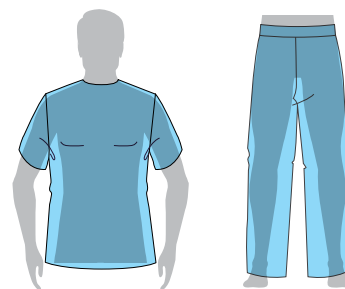
SLIM

Close fit designed for ease of mobility no matter what the job demands.



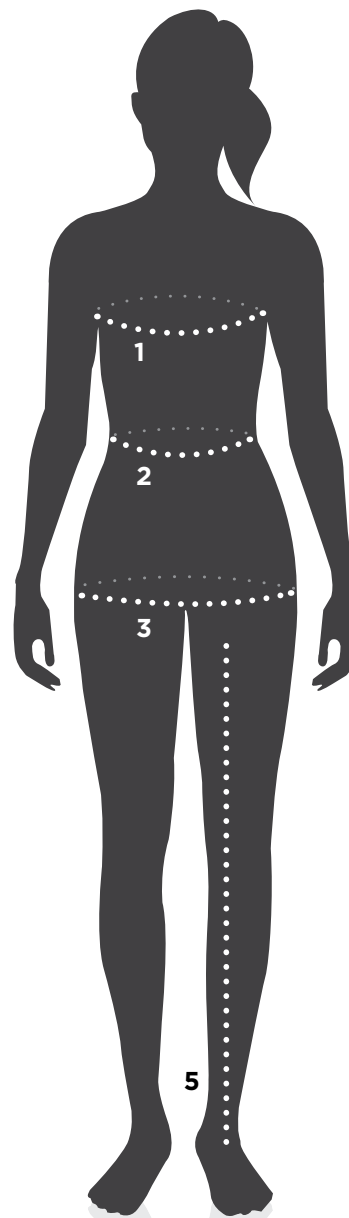
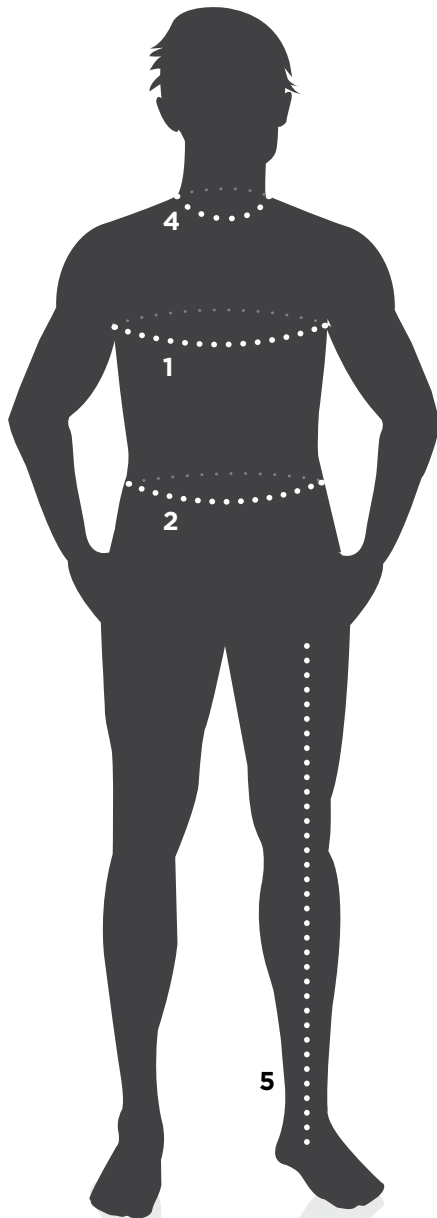
STRAIGHT

Modern, easy fit, accommodating a wide range of movement for all day comfort.



RELAXED

Generous fit with plenty of room to move.



MEASURING GUIDELINES

Each tailor and patternmaker has his or her way of measuring. This fitting guide will help to ensure a consistency of approach.

- Do not take your measurements yourself
- Ask a professional dressmaker or tailor to take your measurements for more accuracy
- Wear light clothing as thicker garments like jumpers and jeans will add to measurements
- Remove items from pockets such as wallets in the back hip pocket
- Measure with the tape flat against the body
- Do not hold the tape too loose or too tight
- Do not put fingers under the tape

1. CHEST/BUST CM

Measure around the body across the fullest part of the chest, keeping the tape level and straight.

2. WAIST CM

Women: Measure around the natural waistline, keeping the tape level and straight. Men: Measure the waist where they wear their pants.

3. HIP/SEAT CM

Women only: Measure at the widest point (approx 20–23cm) below the waist. At this position the tape should slide easily up, down and over the bottom.

4. NECK/COLLAR CM

Men only: Measure the circumference at the base of the neck, where a shirt collar would sit or using a well fitting shirt, lay flat on table, measure from centre of button to centre of button hole.

5. IN-LEG LENGTH CM

Measure from crotch to floor without shoes.

QUICK REFERENCE

PANTS

FOUNDATIONS



Y02501
SEE PAGE 16



Y02615
SEE PAGE 16



Y02500
SEE PAGE 16



Y02750
SEE PAGE 16



Y02560
SEE PAGE 16



Y02594
SEE PAGE 17



Y02592
SEE PAGE 17



Y02590
SEE PAGE 17



Y03875
SEE PAGE 17



Y03876
SEE PAGE 17



Y44610
SEE PAGE 18

FOUNDATIONS



Y03514
SEE PAGE 18



Y03513
SEE PAGE 18



Y17062
SEE PAGE 29



Y02202
SEE PAGE 36



Y02906
SEE PAGE 36



Y02210
SEE PAGE 36



Y02188
SEE PAGE 36



Y03019
SEE PAGE 36



Y03041
SEE PAGE 36

LEGENDS



Y02202
SEE PAGE 36



Y02906
SEE PAGE 36



Y02210
SEE PAGE 36



Y02188
SEE PAGE 36



Y03019
SEE PAGE 36



Y03041
SEE PAGE 36

KOOLGEAR



Y02275
SEE PAGE 42



Y02300
SEE PAGE 42



Y02255
SEE PAGE 48



Y03048
SEE PAGE 48

3056



Y02255
SEE PAGE 48



Y03048
SEE PAGE 48

WOMEN'S



Y08810
SEE PAGE 52



Y08850
SEE PAGE 52



Y08130
SEE PAGE 52



Y08079
SEE PAGE 52



Y08887
SEE PAGE 52



Y03042
SEE PAGE 52

SHIELDTEC FR



Y02420
SEE PAGE 62



Y02425
SEE PAGE 62



Y02520
SEE PAGE 62



Y02525
SEE PAGE 62



Y02320
SEE PAGE 56



Y02325
SEE PAGE 56

WOMEN'S SHIELDTEC FR



Y02320
SEE PAGE 56



Y02325
SEE PAGE 56

SHORTS

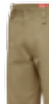
FOUNDATIONS



Y05501
SEE PAGE 18



Y05511
SEE PAGE 18



Y05500
SEE PAGE 18



Y05545
SEE PAGE 19



Y05594
SEE PAGE 19



Y05590
SEE PAGE 19



Y05681
SEE PAGE 19



Y05066
SEE PAGE 37



Y05906
SEE PAGE 37



Y05083
SEE PAGE 37



Y05036
SEE PAGE 37

LEGENDS



Y05066
SEE PAGE 37



Y05906
SEE PAGE 37



Y05083
SEE PAGE 37



Y05036
SEE PAGE 37

LEGENDS



Y05038
SEE PAGE 37



Y05140
SEE PAGE 42



Y05037
SEE PAGE 48



Y05100
SEE PAGE 48



Y05115
SEE PAGE 48



Y08851
SEE PAGE 53



Y08180
SEE PAGE 53



Y08106
SEE PAGE 53



Y08888
SEE PAGE 53

KOOLGEAR



Y05140
SEE PAGE 42



Y05037
SEE PAGE 48



Y05100
SEE PAGE 48



Y05115
SEE PAGE 48



Y08851
SEE PAGE 53



Y08180
SEE PAGE 53



Y08106
SEE PAGE 53



Y08888
SEE PAGE 53

3056



Y05037
SEE PAGE 48



Y05100
SEE PAGE 48



Y05115
SEE PAGE 48



Y08851
SEE PAGE 53



Y08180
SEE PAGE 53



Y08106
SEE PAGE 53



Y08888
SEE PAGE 53

WOMEN'S



Y08851
SEE PAGE 53



Y08180
SEE PAGE 53



Y08106
SEE PAGE 53



Y08888
SEE PAGE 53

GUIDE

SHORT SLEEVE SHIRTS

FOUNDATIONS



Y07510
SEE PAGE 20



Y07540
SEE PAGE 20



Y07529
SEE PAGE 20



Y07339
SEE PAGE 20



Y04311
SEE PAGE 21



Y07116
SEE PAGE 22



Y07591
SEE PAGE 23



Y07691
SEE PAGE 23



Y07393
SEE PAGE 38



Y04203
SEE PAGE 38

LEGENDS

KOOLGEAR



Y07715
SEE PAGE 42



Y07559
SEE PAGE 43



Y07725
SEE PAGE 44



Y07735
SEE PAGE 44



Y08068
SEE PAGE 54



Y08041
SEE PAGE 55

WOMEN'S

LONG SLEEVE SHIRTS

FOUNDATIONS



Y07500
SEE PAGE 20



Y07530
SEE PAGE 20



Y07528
SEE PAGE 20



Y07338
SEE PAGE 21



Y04310
SEE PAGE 21



Y07295
SEE PAGE 21



Y07982
SEE PAGE 22



Y07990
SEE PAGE 22



Y07989
SEE PAGE 22



Y07227
SEE PAGE 22



Y07984
SEE PAGE 22

FOUNDATIONS



Y07590
SEE PAGE 23



Y07690
SEE PAGE 23



Y07899
SEE PAGE 23



Y07419
SEE PAGE 38



Y04202
SEE PAGE 38



Y07720
SEE PAGE 42



Y07558
SEE PAGE 43



Y07978
SEE PAGE 43



Y07996
SEE PAGE 43



Y07730
SEE PAGE 44

LEGENDS

KOOLGEAR

KOOLGEAR



Y07740
SEE PAGE 44



Y07745
SEE PAGE 44



Y07333
SEE PAGE 49



Y08069
SEE PAGE 54



Y08040
SEE PAGE 55



Y08220
SEE PAGE 55



Y08225
SEE PAGE 55

3056

WOMEN'S

SHIELDTEC FR



Y04250
SEE PAGE 59



Y04350
SEE PAGE 59



Y04450
SEE PAGE 59



Y04550
SEE PAGE 59



Y04150
SEE PAGE 59



Y04050
SEE PAGE 61

WOMEN'S SHIELDTEC FR

QUICK REFERENCE

SHORT SLEEVE POLOS

FOUNDATIONS



Y11306
SEE PAGE 24



Y11363
SEE PAGE 24



Y11356
SEE PAGE 24



Y11332
SEE PAGE 24



Y11970
SEE PAGE 24



Y11376
SEE PAGE 24



Y11830
SEE PAGE 45



Y11396
SEE PAGE 45



Y11383
SEE PAGE 45



Y11525
SEE PAGE 48



Y11399
SEE PAGE 55

KOOLGEAR

3056

WOMEN'S

LONG SLEEVE POLOS

FOUNDATIONS



Y11343
SEE PAGE 24



Y11307
SEE PAGE 24



Y11950
SEE PAGE 25



Y11360
SEE PAGE 25



Y11890
SEE PAGE 45



Y11389
SEE PAGE 45



Y11379
SEE PAGE 45



Y11392
SEE PAGE 55

KOOLGEAR

WOMEN'S

JUMPERS/HOODIES/KNITS

FOUNDATIONS



Y19314
SEE PAGE 26



Y19316
SEE PAGE 26



Y19317
SEE PAGE 26



Y19315
SEE PAGE 27



Y19326
SEE PAGE 27



Y19365
SEE PAGE 27



Y19325
SEE PAGE 26



Y19327
SEE PAGE 26



Y19323
SEE PAGE 26



Y19322
SEE PAGE 27



Y19324
SEE PAGE 27

FOUNDATIONS



Y16050
SEE PAGE 28



Y16051
SEE PAGE 28

JACKETS/VESTS

FOUNDATIONS



Y06058
SEE PAGE 28



Y06064
SEE PAGE 28



Y06057
SEE PAGE 28



Y06556
SEE PAGE 29



Y17156
SEE PAGE 29



Y06546
SEE PAGE 29



Y06570
SEE PAGE 29



Y06554
SEE PAGE 30



Y06545
SEE PAGE 30



Y21027
SEE PAGE 30



Y21283
SEE PAGE 30

FOUNDATIONS

LEGENDS

3056



Y06040
SEE PAGE 30



Y06050
SEE PAGE 30



Y06585
SEE PAGE 38



Y06560
SEE PAGE 38



Y06575
SEE PAGE 49

GUIDE

OVERALLS/COVERALLS

FOUNDATIONS



Y00270
SEE PAGE 32



Y00262
SEE PAGE 32



Y00122
SEE PAGE 32



Y01526
SEE PAGE 32



Y01055
SEE PAGE 32



Y00445
SEE PAGE 32



Y00010
SEE PAGE 31



Y00030
SEE PAGE 31



Y00015
SEE PAGE 31



Y01555
SEE PAGE 31



Y01010
SEE PAGE 31

SHIELDTEC FR



Y00055
SEE PAGE 60

ACCESSORIES

GLOVES



Y26071
SEE PAGE 64



Y26073
SEE PAGE 64



Y26075
SEE PAGE 64



Y26079
SEE PAGE 64



Y26077
SEE PAGE 64



Y26081
SEE PAGE 64

SOCKS



Y20008
SEE PAGE 65



Y20065
SEE PAGE 65



Y20501
SEE PAGE 65



Y20100
SEE PAGE 65

LEGENDS



Y22980
SEE PAGE 65

3056



Y22420
SEE PAGE 66



Y22370
SEE PAGE 66

BELTS



Y09402
SEE PAGE 66



Y22300
SEE PAGE 66

HEADWEAR



Y22330
SEE PAGE 66



Y22375
SEE PAGE 66

FOOTWEAR

SIDE ZIP



Y60120
SEE PAGE 80



Y60125
SEE PAGE 80



Y60085
SEE PAGE 80



Y60086
SEE PAGE 80



Y60170
SEE PAGE 80



Y60160
SEE PAGE 80



Y60165
SEE PAGE 80



Y60087
SEE PAGE 80



Y60088
SEE PAGE 80



Y60083
SEE PAGE 81



Y60084
SEE PAGE 81

LACE UP

ELASTIC GUSSET

REFLECTIVE

SAFETY JOGGER



Y60110
SEE PAGE 81



Y60111
SEE PAGE 81



Y60130
SEE PAGE 81

WORKWEAR ONLINE

THE WORKWEAR GROUP OFFERS FLEXIBLE ELECTRONIC ORDERING SOLUTIONS FOR OUR CUSTOMERS.

The Workwear Group offers flexible electronic ordering solutions for our customers.

Workwear Online offers you 24 hour access to manage your account. It is a quick and simple way to order your workwear online. Our e-trading solutions are security enabled, offer flexible payment methods, track and trace, available stock visibility, order status and history, invoice and credit copy downloads, catalogue downloads, customisation of ranges/favourites and more.

For online ordering, simply request secure access to www.workweargrouponline.com.au via your Account Manager/Sales Representative.

PLACING ORDERS

1. Log in to www.workweargrouponline.com.au
2. Browse products by selecting the Hard Yakka catalogue or by entering the style name/product number in the "Product Search" field.
3. Select the product by clicking on the name or image of your choice.
4. Enter the quantity in the desired size/colour box.
5. Add the selected products to your shopping cart by clicking "Add to Cart" at the bottom right corner of the screen.
6. To add more products, repeat steps 1-5.
7. When you have finished filling your Shopping Cart, place the order with Hard Yakka by following 3 quick steps:
 - a. Go to Cart/Checkout
 - b. Review your items and click on "Checkout" where your own order reference number can be added at this stage
 - c. Click "Place Order" (an email will be sent to your registered email address as confirmation of your order)

FOR FURTHER ASSISTANCE, PLEASE CONTACT YOUR SALES REPRESENTATIVE OR CONTACT OUR CUSTOMER SERVICE ON 1800 644 517.



Hard Yakka®
Nothing's Tougher.



Hard Yakka

A man with short brown hair and a light beard is sitting on a yellow forklift. He is wearing a black hoodie with red drawstrings, tan work pants with multiple pockets, and black work boots. He is holding a pair of tan work gloves in his lap. The background shows the mechanical parts of the forklift and a gravel surface.

FOOTWEAR

UTILITY SIDE ZIP - ULTIMATE COMFORT



30
DAY
GUARANTEE

**COMFORT
GUARANTEE**

12
MONTH
GUARANTEE

**MANUFACTURING
GUARANTEE**



UTILITY 130MM (5 INCH) SIDE ZIP BOOT

STYLE CODE

Wheat (Y60120), Black (Y60125)

SIZE

UK 4-14 (7.5-10.5)

FEATURES

- Certified to AS/NZS 2210.3:2009
- Water Resistant Leather & Breathable Nylon Upper
- YKK 10 Gauge Coil Zipper
- Dual Layer Memory foam / PU footbed
- Additional under foot Phylon Interlayer
- Nylon (Non-Metallic) Shank
- TPU Outsole, PU Midsole
- Ideal for Construction, General Purpose, Transport & Logistics



GRAVEL 150MM (6 INCH) LACE BOOT

STYLE CODE & SIZE

Sand (Y60085), UK 6-13 (Full sizes only)

Black (Y60086), UK 3-15 (7.5-10.5)

FEATURES

- Certified to AS/NZS 2210.3:2009
- Water Resistant Leather
- Dual Layer Memory foam / PU footbed
- Padded Collar
- Nylon (Non-Metallic) Shank
- PU Outsole, PU Midsole
- Ideal for Light Industrial, Warehousing, Transport, General Purpose



UTILITY ELASTIC GUSSET

STYLE CODE

Wheat (Y60170), Claret (Y60160), Black (Y60165)

SIZE

UK 4-14 (7.5-10.5)

FEATURES

- Certified to AS/NZS 2210.3:2009
- Water Resistant Leather
- Quality elastic gore
- Dual Layer Memory foam / PU footbed
- Additional under foot Phylon Interlayer
- Nylon (Non-Metallic) Shank
- TPU Outsole, PU Midsole
- Ideal for Construction, Warehouse, Light Industrial, General Purpose



GRIT ELASTIC GUSSET

STYLE CODE

Sand (Y60087), Black (Y60088)

SIZE

UK 6-13 (Full sizes only)

FEATURES

- Certified to AS/NZS 2210.3:2009
- Water Resistant Leather
- Quality elastic gore
- Dual Layer Memory foam / PU footbed
- Nylon (Non-Metallic) Shank
- PU Outsole, PU Midsole
- Ideal for Light Industrial, Warehousing, Transport, General Purpose





BLIZZARD HI 150MM (6 INCH) LACE REFLECTIVE

STYLE CODE

Black (Y60083)

SIZE

UK 6-13 (7.5-10.5)

FEATURES

- Certified to AS/NZS 2210.3:2009
- Nubuck + Silver reflective trim
- Memory Foam / PU innersole with Poron heel pod
- Additional under foot Phylon Interlayer
- Moulded rubber toe protector
- Non-Metallic Shank
- Aegis™ Anti-Microbial lining
- Rubber Outsole, Phylon Midsole
- Ideal for Construction, General Industry, Warehouse, Transport



COMPOSITE
TOE CAP



300°C HEAT
RESISTANT
OUTSOLE



AIRPORT
FRIENDLY



FUEL OIL
& SLIP
RESISTANT



ANTI-STATIC



MEMORY
FOAM
FOOTBED



benchmark
PRODUCT CERTIFICATION



BLIZZARD LO LACE TEC REFLECTIVE

STYLE CODE

Black (Y60084)

SIZE

UK 6-13 (7.5-10.5)

FEATURES

- Certified to AS/NZS 2210.3:2009
- Nubuck + Silver reflective printing
- Memory Foam / PU innersole with Poron heel pod
- Additional under foot Phylon Interlayer
- Moulded rubber toe protector
- Non-Metallic Shank
- Aegis™ Anti-Microbial lining
- Rubber Outsole, Phylon Midsole
- Ideal for Construction, General Industry, Warehouse, Transport



COMPOSITE
TOE CAP



300°C HEAT
RESISTANT
OUTSOLE



AIRPORT
FRIENDLY



FUEL OIL
& SLIP
RESISTANT



ANTI-STATIC



MEMORY
FOAM
FOOTBED



benchmark
PRODUCT CERTIFICATION



AVALANCHE SAFETY JOGGER

STYLE CODE

Black/Yellow (Y60110), Grey/Orange (Y60111), Black (Y60130)

SIZE

UK 6-14 (Full sizes only)

FEATURES

- Certified to AS/NZS 2210.3:2009
- Abrasion Resistant PU & Breathable Mesh
- TPU Arch Support Stabiliser
- Dual layer memory foam / PU footbed
- Rubber toe protection
- Variegated Hold Fast shoe laces
- Ideal for Transport, Warehouse, Light Industrial



COMPOSITE
TOE CAP



300°C HEAT
RESISTANT
OUTSOLE



AIRPORT
FRIENDLY



FUEL OIL
& SLIP
RESISTANT



MEMORY
FOAM
FOOTBED



benchmark
PRODUCT CERTIFICATION

**COMPOSITE TOE CAPS
ARE UP TO 50%
LIGHTER THAN STEEL,
NON-METALLIC AND
NON-MAGNETIC,
MAKING THESE BOOTS
AIRPORT FRIENDLY**

FOOTWEAR ICONS GUIDE



30 DAY COMFORT GUARANTEE

Our workboots have been engineered to provide maximum comfort. After a careful study of the Australian foot anatomy, we have designed Hard Yakka boots with a wider last, sole and toe cap. We are so confident you will love these boots that they come with a 30-day comfort guarantee.



DUAL DENSITY PU / TPU

Thermoplastic polyurethane outsoles have many useful properties including elasticity and resistance to oil, grease and abrasion. The polyurethane midsole provides additional comfort and energy rebound. Heat resistant to 130 degrees Celsius.



AIRPORT FRIENDLY

No need to take off your boots every time you travel. The entire boot is non-metallic, including the toe caps, which can be x-rayed, will not rust and will not transmit electricity. This allows you to move through security environments without triggering metal detectors.



EVA MIDSOLE

Ethylene Vinyl Acetate (EVA) is popularly known as expanded rubber or foam rubber. EVA is typically used as a shock absorber as it provides excellent cushioning and is a lightweight material.



ANTI-STATIC

Boots with Anti-Static properties are designed to reduce the build up of excess static electricity by conducting body charge to the ground. This offers a level of protection against ignition hazards such as flammable materials and gases.



MEMORY FOAM FOOTBED

Sensitive to pressure and moulds perfectly around the contours of your foot. The PU bottom layer provides permanent cushioning and shock absorption.



COMPOSITE TOE CAP

50% lighter than steel, non-metallic, non-magnetic, non-conductive and anti-corrosive. Its lightweight construction decreases foot fatigue. All Hard Yakka footwear complies with Australian and New Zealand standards AS/NZS 2210.3:2009.



STEEL SAFETY TOE CAP

All Hard Yakka footwear complies with Australian and New Zealand standards AS/NZS 2210.3:2009.



DUAL DENSITY PU / RUBBER

Hard Yakka rubber outsoles are tough, hard wearing, and oil and grease-resistant. The polyurethane midsole provides additional comfort and energy rebound. Heat resistant to 300 degrees Celsius.



TOE BUMPER

Added toe protection which helps to increase strength and abrasion resistance.

FOOTWEAR LEATHERS

One of the most important materials used in Hard Yakka footwear is the upper leather

Hard Yakka leathers are carefully selected for their suitability in industrial safety footwear. The softness and absorbency of leather assists in the control of temperature for feet, an important factor in comfort within an industrial environment. Leather has the ability to breathe through numerous small pores, allowing perspiration to diffuse, while at the same time restricting the entry of fluids, including water.

Leather also provides a significant benefit by trapping air between the fibres and becoming a thermal insulator. This characteristic is a barrier to external heat or cold damp and greatly assists in raising the level of comfort for the wearer.

Another important feature of leather is its flexibility and ‘give’ as well as the capacity to stretch either in wear or by insertion of devices inside the boot or shoe. Hard Yakka leathers have been selected because of their softness and pliable surface.



FULL-GRAIN LEATHER
is considered amongst the best quality leather you can buy. Hard Yakka full-grain leather is made using premium cow hides, which is one of the most breathable leathers you can wear.



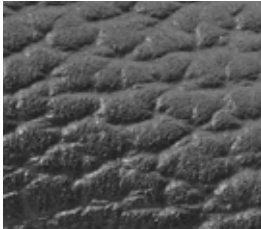
KIP LEATHER
is soft and supple cow hide. It is stronger, smoother and more durable than other types of leathers. Kip Leather tends to be lighter in weight as compared to other leathers.



NUBUCK LEATHER
is made from full-grain cattle hides that have been sanded or buffed on the grain side to give a slight texture (short fibres) producing a velvet-like surface.
Hard Yakka Nubuck is carefully selected from the thick side of cattle hides ensuring our boots meet 2.2mm thickness requirements for durability.



SUEDE LEATHER
is made from the underside of cattle hides. Splits from thick cow leather have a woollen finish due to the nature of its fibre.
As suede does not include the tough exterior skin layer, it is less durable but softer than standard full-grain leather.



RAMBLER LEATHER
is created by applying a pigmented finish to the surface of the leather. The process is completed by embossing or printing a grain pattern onto the surface.

HOW TO WORK OUT YOUR SHOE SIZE

MEN'S EEE fit																		
AUS/UK	5	5.5	6	6.5	7	7.5	8	8.5	9	9.5	10	10.5	11	12	13	14	15	16
USA	6	6.5	7	7.5	8	8.5	9	9.5	10	10.5	11	11.5	12	13	14	15	16	17
European	39	39.5	40	40.5	41	41.5	42	42.5	43	43.5	44	44.5	45	46	47	48	49	50

WOMEN'S (For women's specific styles) D fit													
AUS/USA	5	5.5	6	6.5	7	7.5	8	8.5	9	9.5	10	10.5	11
UK	3	3.5	4	4.5	5	5.5	6	6.5	7	7.5	8	8.5	9
European	35	36	37	37.5	38	38.5	39	39.5	40	40.5	41	41.5	43

The grey shaded boxes show the Mens' to Women's equivalent sizes for unisex sized footwear. For example, a Men's AUS/UK 5 is equivalent to a Women's AUS/USA 7.
Please Note: Unisex sizes are wider fits for women than women's specific footwear.

NOTES

Handwriting practice lines consisting of 25 horizontal dotted lines.

